

ArcGIS 10.1 for Desktop Advanced, Student Edition Install Instructions

Step 1 Visit “esri.com/StudentEdition” to activate your authorization numbers (the 12-digit no. beginning with “EVA” in the lower left inside sleeve of the CD pack)

Step 2 Sign up for your free ESRI Global Account; fill in the following:
Username, Password, Confirm Password, Email Address, Confirm Email, Security Question, Answer, First Name, Last Name, Organization (WOU), Address 1 (345 N. Monmouth Ave), City/Town (Monmouth), Country (US), State (Oregon), Zip (97361), Department (Earth and Physical Science), Title (Student), Phone Number (503-838-8398)

Click: “Start Your Free Trial”

Step 3 Enter your authorization no. at the lower left of the inside sleeve of the CD install disk

Click “Activate ArcGIS”

Make sure you selected the highest level license: Single Use, “Advanced” version

You will receive the following message:

Thank you!

Thank you for activating your ArcGIS for Desktop Student Trial authorization number.

You are now ready to install your ArcGIS for Desktop software. During the installation process, you will be prompted to enter this number.

Insert the DVD into your computer to start the installation. If necessary, open Setup.exe to launch the installation.

When prompted, select **ArcGIS for Desktop Advanced Single Use** and enter your authorization number.

Step 4. Insert “ArcGIS for Desktop Advanced” CD; autorun will begin the disk installation process

Step 5. Read the quick start user guide; become familiar with the process

Step 6. Begin the setup-click and proceed process:

- Click “setup” hot button for the ArcGIS for Desktop installation line item
- “Welcome to ArcGIS setup”; click “next”
- Click the “Accept the license agreement” radio button, click “next”
- Click the “complete” radio button, click “next”
- Default to ArcGIS directory, click “next”
- Default to Python directory, click “next”
- “Ready to Install” click next

Step 7. Installation Process Begins:

- “Updating System” The features you selected are currently being installed

Depending on your computer resources and speed, the file-copy-install process can take up to 15-20 minutes, the progress bar will give you a sense of forward motion and the status of the process.

- “Writing Registry Values” ... it’s getting down to it when you see this
- “ArcGIS10.1 Successfully Installed”
- Click Finish

Step 8. ArcGIS Administrator Wizard Pops Up or you can find it at Start-Programs-ArcGIS-Administrator

The software should now validate / ask you to validate the authorization code that you registered at the “esri.com/StudentEdition” web site. Once Authorized, you should now be able to find / use / open the ArcGIS.

Choose the following options / radio buttons:

- Setup option: “ArcInfo Single Use”
- Authorize Now
- I have installed software and need to authorize now
- Authorize with ESRI using the internet
- Re-Enter the authorization information from Step 2 above
- Enter the software authorization number from the lower left inside sleeve of CD case / step 1
- “I DO NOT want to authorize extensions at this time” ... they are already part of the package

- Evaluate Extensions Window: highlight all of them and move them to the “Evaluate Extensions” Window

- “Authorizing Software” progress window will engage the process with mother ship

NOTE: If authorization fails, it’s likely you didn’t complete step 1 above. If you didn’t, complete step 1 above and then re-open the Start-Programs-ArcGIS-Administrator; and repeat Step 8

Trouble Shooting: If you’re installation is not complete or if you run into a fatal error message when you try to launch the software... there could be numerous glitchy/windows/ESRI software issues causing a conflict. Some possible problems include: licensing conflicts, invalid authorization code, not enough system resources/proper operating system to run the software, weird devils in your machine, rats... all sorts of things.

Solutions to Problems:

- Completely uninstall the software using Windows “Add/Remove” programs from Control Panel
- Google Search “ArcGIS10.1 for Students Authorization Failed” and read all the problems/solutions other people have run into
- Google Search “ArcGIS10.1 for Students Error” or Google “ArcGIS10 sucks” and welcome to the wonderful world of problem solving software.

If all else fails:

Plan A – use ArcGIS10.1 in NS216 or NS218A or ITC003 computer labs

Plan B – use terminal server TS1.WOU.EDU with the remote login option

Plan Z – one foot in front of the other, “Expect the Worse, and Hope for the Best”

Navigation Menu

[Home](#)
[Research](#)
 [Projects](#)
 [Publications](#)
 [Study Sites](#)
[ET-AL Lab](#)
[Students & Teaching](#)
 [Graduate Students](#)
 [Prospective Students](#)
 [Courses](#)
[News & Announcements](#)
[Service](#)
[Background](#)
[Contact](#)
[River Links](#)
[Non-Research](#)
 © 2013 & Disclaimer

Wheaton et al.

**ET-AL Software**

[GCD - Geomorphic Change
 Detection Software](#)
[CHaMP Transformation Tool](#)

[Home](#) > [Students & Teaching](#) > [Teaching Materials](#) > [GIS Help](#) > [ArcGIS Desktop 10 - Education Edition](#) >

Installation Instructions for ArcGIS 10 Student Edition**Contents**

- [1 Step One: Authorize EVA](#)
- [2 Step Two: Install ArcGIS](#)
- [3 Step Three: ArcGIS Administrator](#)
- [4 What if it Fails to Authenticate?](#)
- [5 Using ArcGIS Administrator to Authenticate After the Fact](#)

Step One: Authorize EVA

The first step is to authorize the registration number provided for you inside the DVD case.

Go to <http://www.esri.com/EducationEdition> to activate your authorization number (the 12-digit number beginning with EVA)



You will need to log in with your ESRI account credentials, or create a new account.



Upon creating a new account, you will be asked to enter your registration number. ESRI will then send you an email with the same authorization number telling you that the number is ready for use. You can then proceed to step two (note if you accidentally install ArcGIS before doing this, you will still be able to use the ArcGIS Administrator (accessed from [Start -> Programs -> ArcGIS -> ArcGIS Administrator](#)) to authenticate the installation after the fact.

Step Two: Install ArcGIS

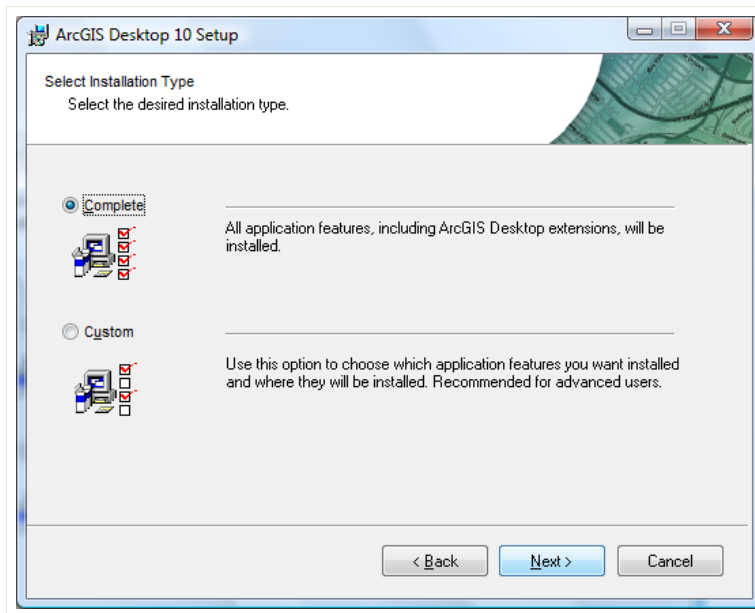
These procedures work whether you download the installation files or use the installation DVD for ArcGIS Desktop 10 available from Software Licensing.

Insert the disc and you will see the main menu below (if the AutoPlay does not run, use the ESRI.exe to bring up the main menu):

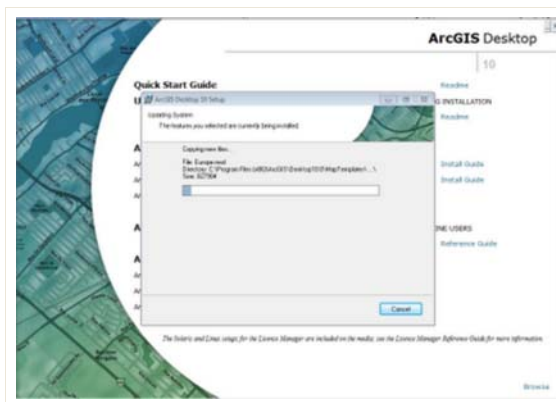


If you have old versions of ArcGIS (e.g. 9.3.1) you will need to uninstall them first. You can use the 'Uninstall Existing ArcGIS Software' to make sure this has taken place.

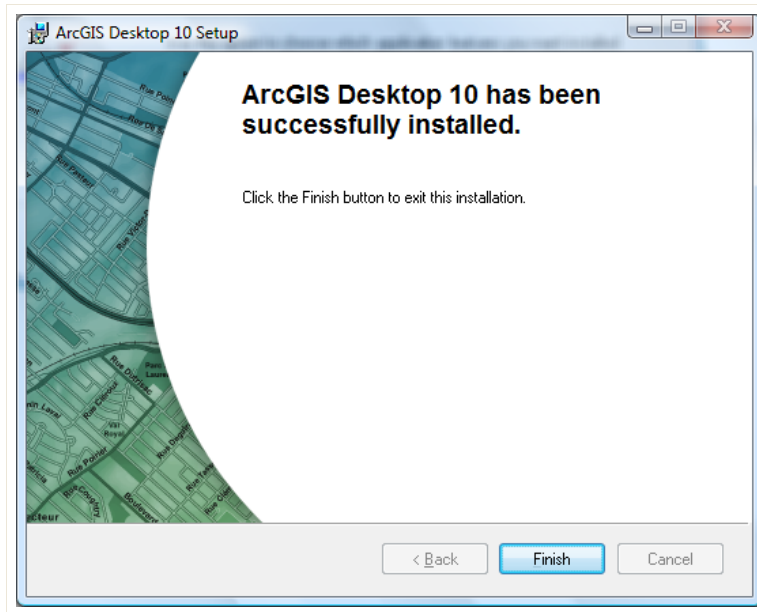
Next you will want to install the ArcGIS Desktop. Run the 'Setup' next to ArcGIS Desktop. In the install process, choose a complete install so that ArcGIS installs all the extensions, Python and other options (Custom if you want to choose not to install some of these extra components):



The other parts of the setup are straight forward and the installation may take several minutes (upto 30 minutes on a slow machine):



Upon completion of the ArcGIS Desktop 10 Setup, you will see this dialog:

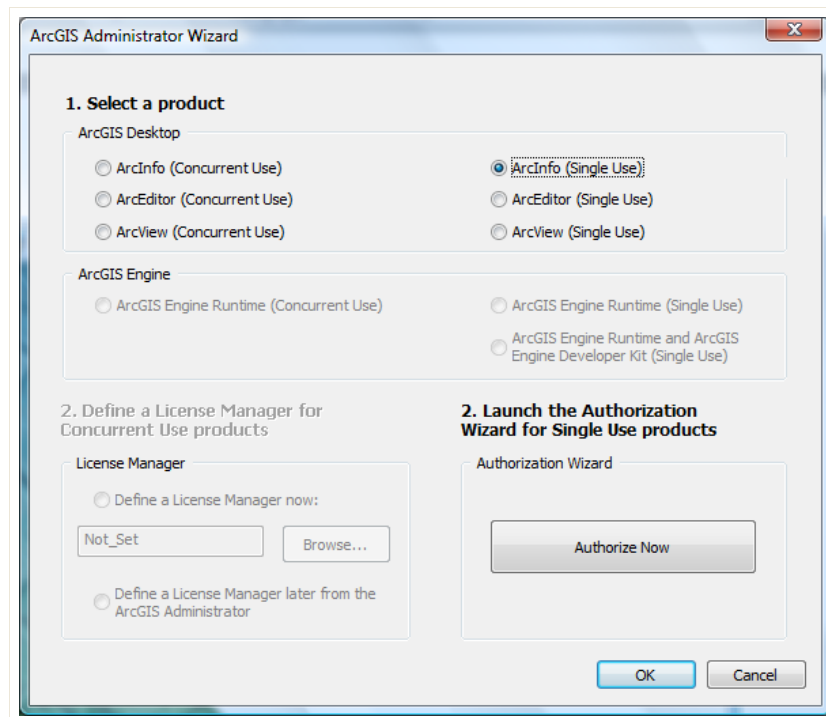


Click Finish and the ArcGIS Administration Wizard will automatically start.

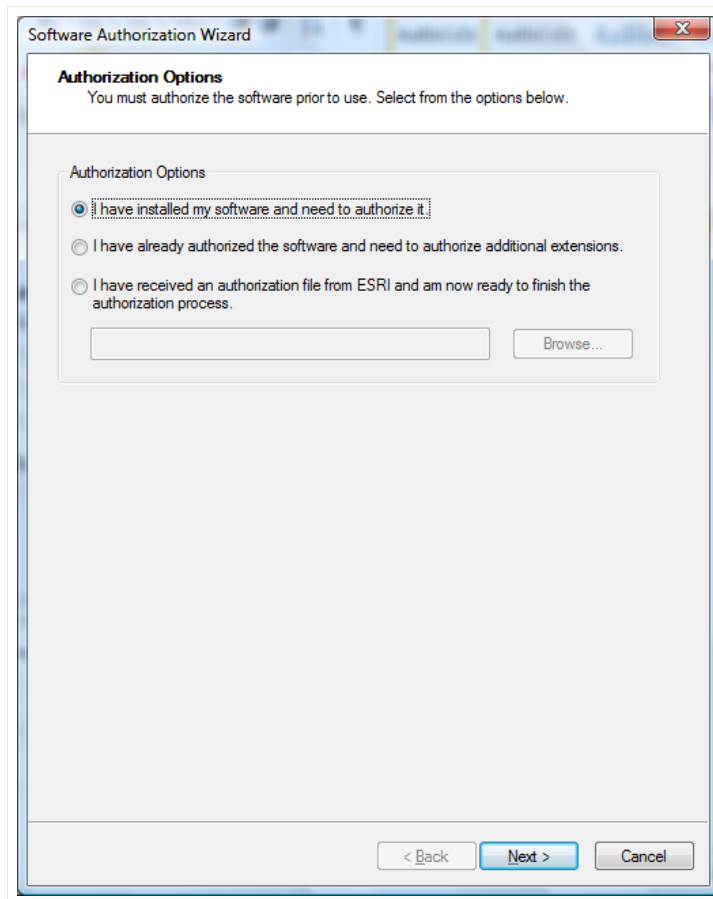
Step Three: ArcGIS Administrator

The Administration Wizard is where you specify the type of ArcGIS Desktop product you want to authorize and authenticate your license. If you do not have internet access or you have not completed the Step One Above to authenticate the authorization codes at <http://www.esri.com/EducationEdition>, you can cancel away from this step and authorize your product later using the License Manager. Otherwise,

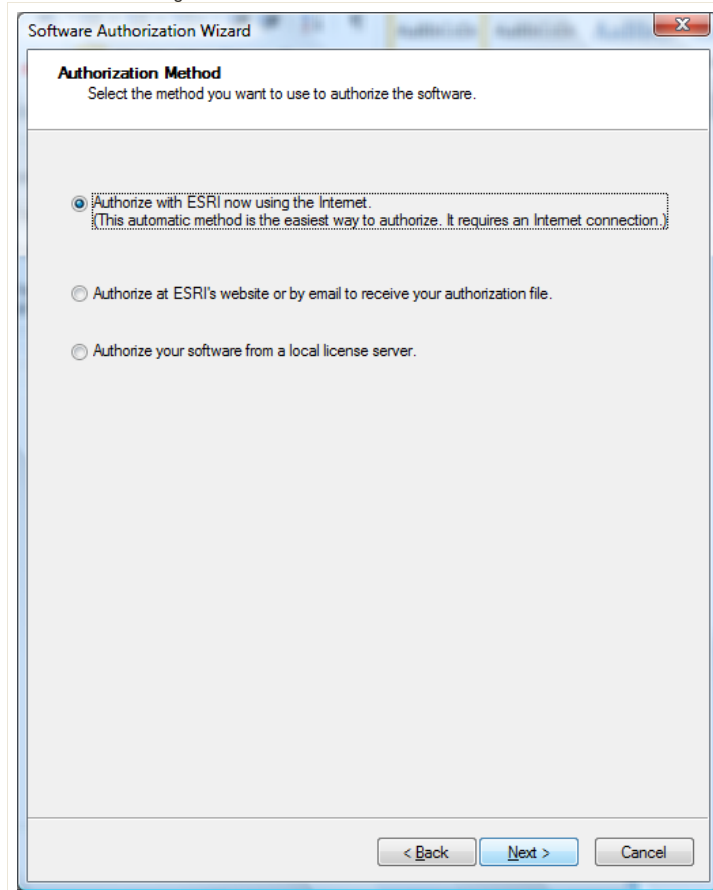
This will bring up the wizard. For an Educational edition you want to click on the Desktop and then change the settings in the dialog below to ArcInfo (Single Use) and then click on *Authorize Now*.



As you have already installed your software, click on the 'I have installed my software and need to authorize it' option and click next.



Choose to 'Authorize with ESRI now using the Internet.'



Click *Next >* and you will be asked for some authorization information. Make sure to Use Utah State University as the organization. Fill out the rest as appropriate for your situation:

Software Authorization Wizard

Authorization Information
We will use the following information to verify our records and authorize your use of the software. (* required field)

*First Name: Joni

*Last Name: McNeely

*Organization: Utah State University

Department: Information Technology

*Address 1: 1015 Old Main Hill

Address 2:

*City: Logan

*State/Province: UT

*Zip/Postal Code: 84322

*Location: United States

*Phone Number: 435-797-7313

*Email: joni.mcneely@usu.edu

Comment: Joe Wheaton
Optional user-defined authorization description.

< Back Next > Cancel

Make sure to specify that you are a student in the next screen.

Software Authorization Wizard

Authorization information (continued)
We will use the following information to verify our records and authorize your use of the software. (* required field)

*Your Organization: Education-Staff/Faculty

*Your Industry: Higher Education

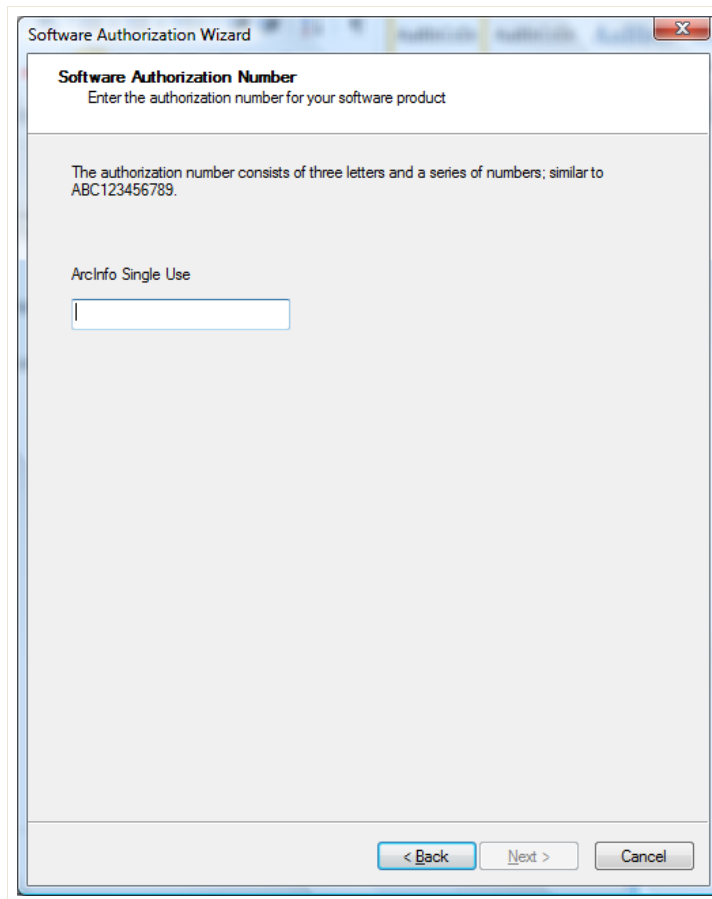
*Yourself: Educator

The personal information you supplied is protected under ESRI's privacy policy. If you want to view ESRI's privacy policy, click the View button below.

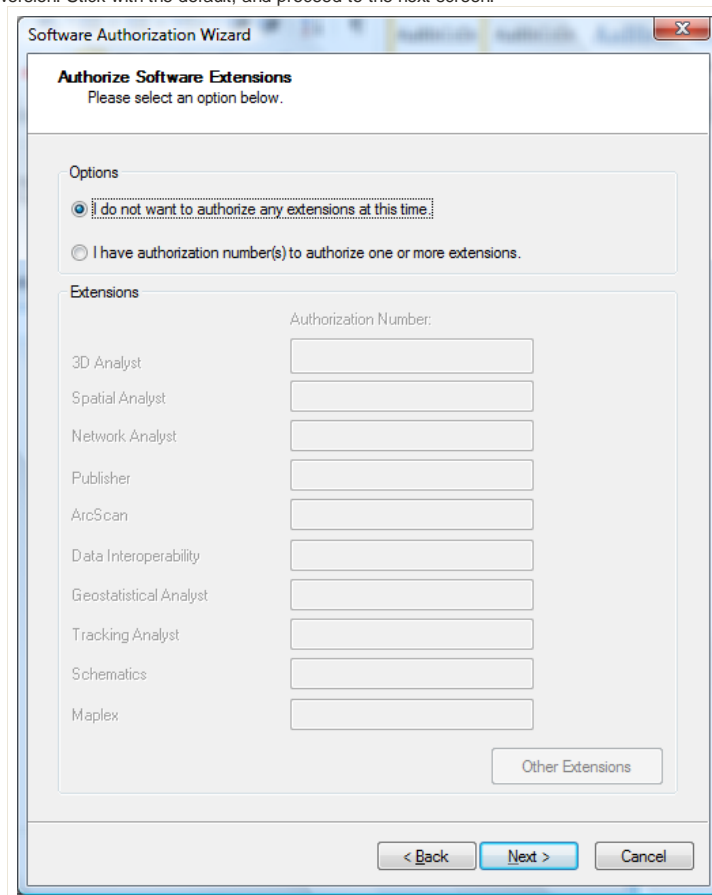
View...

< Back Next > Cancel

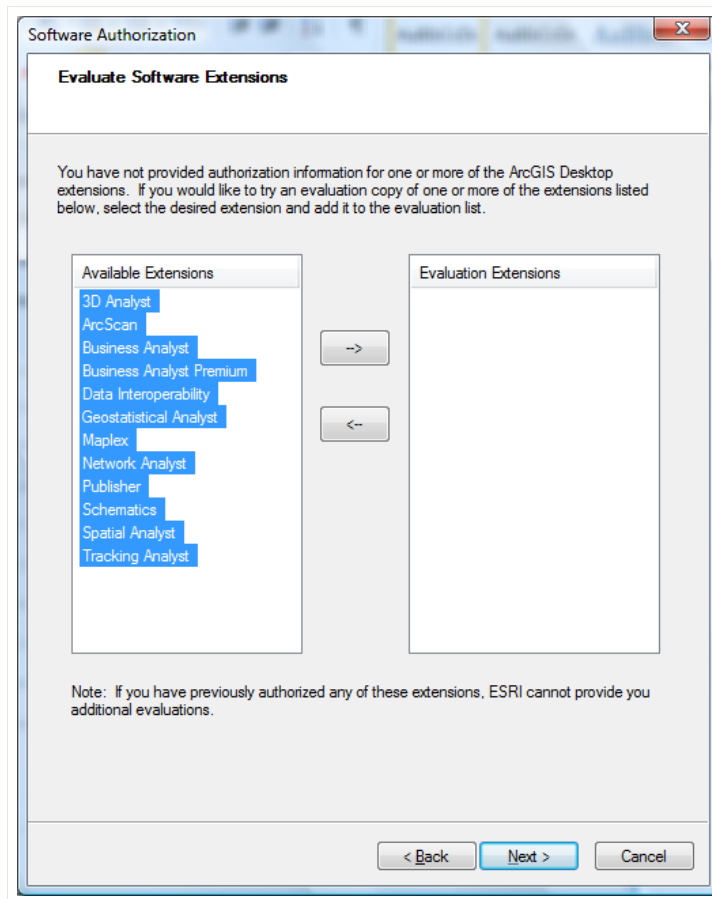
Finally it asks for the Authorization number. Enter in the EVA code from the DVD case and/or your email from ESRI:



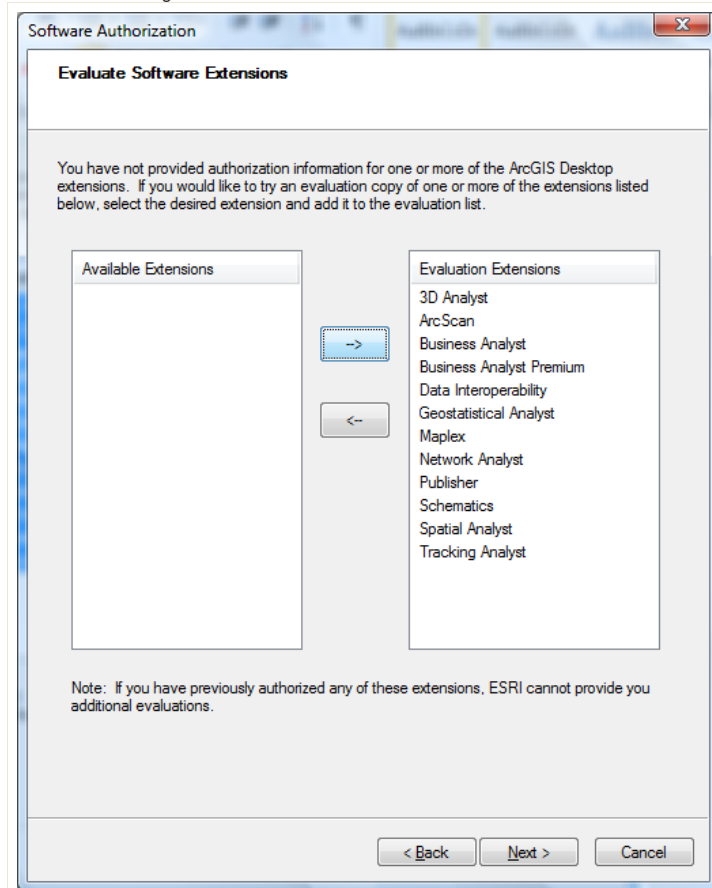
The next screen tends to confuse people. The extensions have already been installed, so you do not enter in licenses for these with the education version. Stick with the default, and proceed to the next screen.



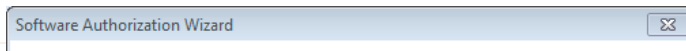
Here you want to include access (for one year) to all those extensions you installed. Highlight the extensions you want to evaluate:

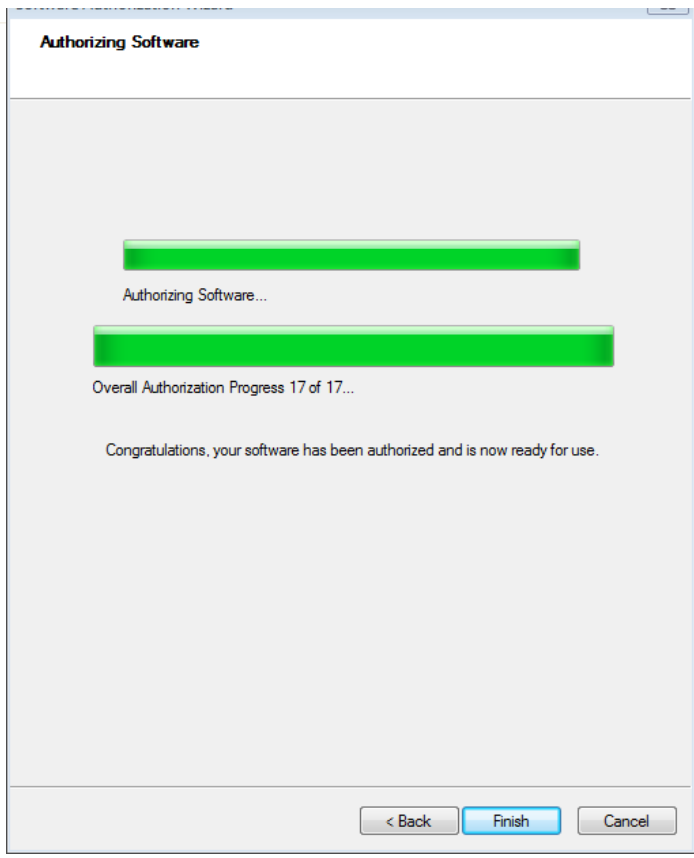


Then use the --> to move them to the right hand side and hit next:



Now, you should see it communicating with ESRI to authorize the software and extensions (number will vary):

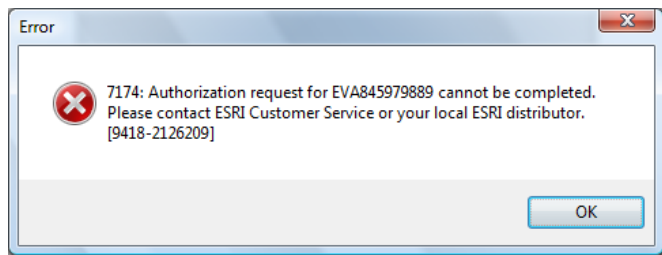




Your software should now be authenticated and ready for one year of use. Enjoy. Exit The ArcGIS Administrator and start ArcGIS to make sure it works. Note you will need to turn on the extensions in ArcGIS for them to be accessible (see [here](#) for help getting started).

What if it Fails to Authenticate?

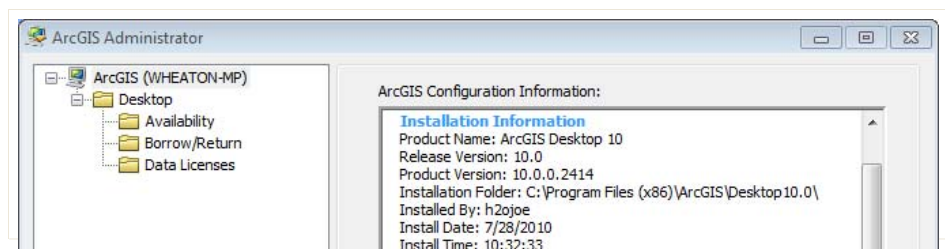
If you get an error message during the 'Authorizing Software' like this:

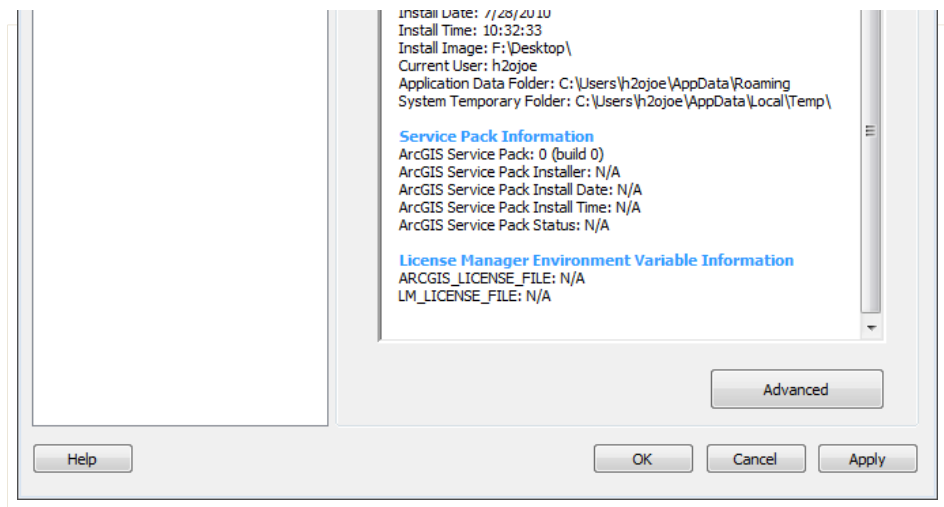


Don't panic. This usually means that you failed to complete step one, you entered the wrong code in, you are using a code that has already been used elsewhere, or there is an internet connection problem. The authentication of the software (i.e. licensing) is totally separate from the installation of the software. The software can be completely installed, you just can't use it. There are many different ways to authenticate after the fact and this can be done using ArcGIS Administrator, which would have been installed with the software. To rectify the problem, complete step one (if you have not already) and then see below for instructions for authenticating after the fact. If this still does not work, try contacting [ESRI Support](#).

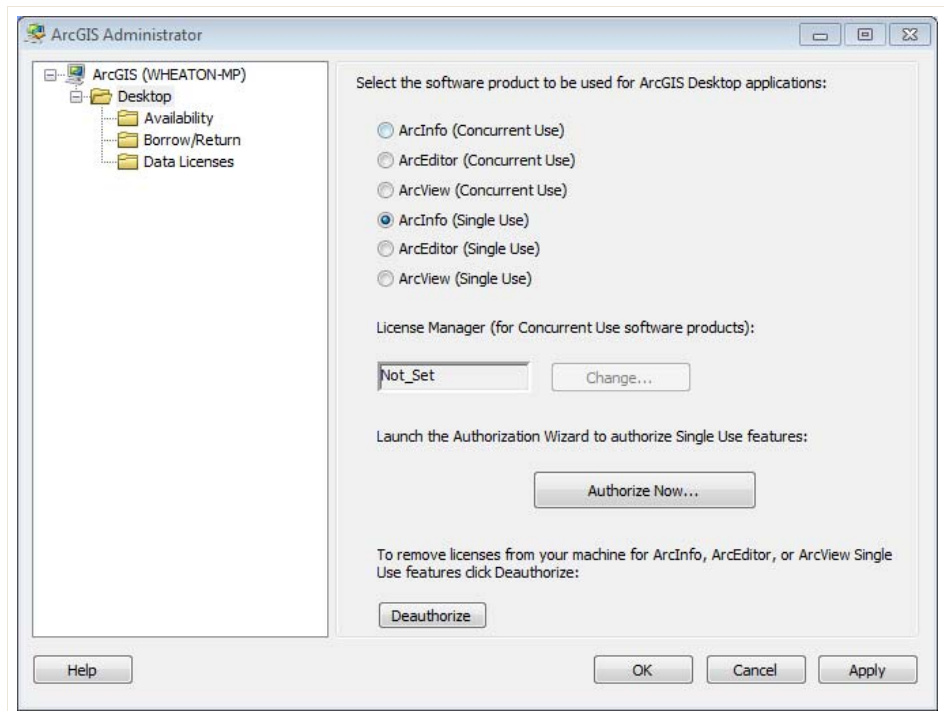
Using ArcGIS Administrator to Authenticate After the Fact

If you need to modify your licenses, you can again use the License Manager. For example, if you purchase a license, you don't need to reinstall the software, you can simply use the Administrator to update or change your license. You will see the following main screen:

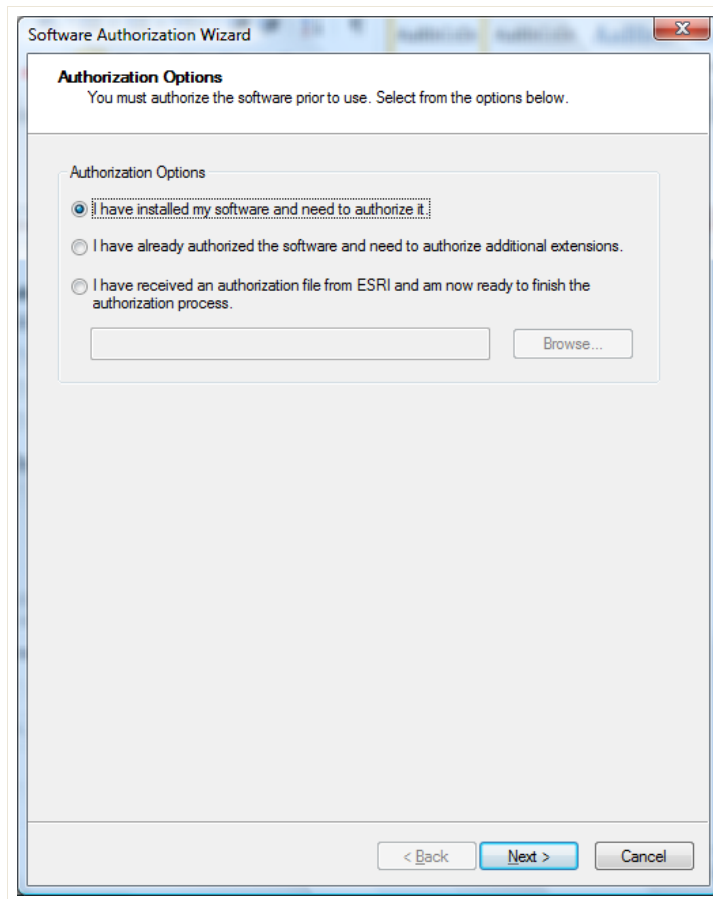




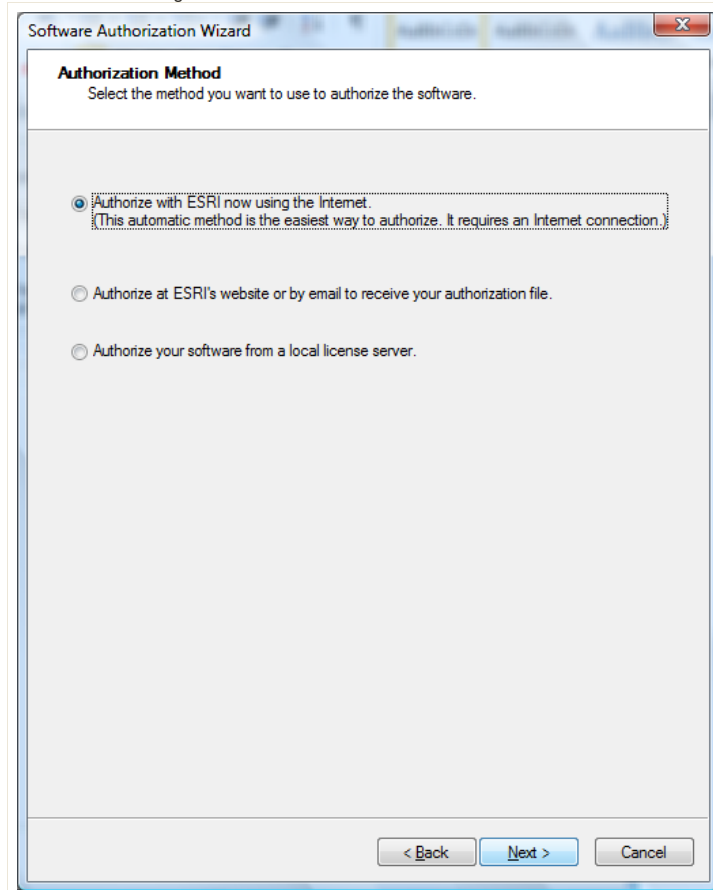
Click on Desktop and you will see options. For an Educational edition you want to click on the Desktop and then change the settings in the dialog below to ArcInfo (Single Use) and then click on *Authorize Now*.



This will bring up the wizard. As you have already installed your software, click on the 'I have installed my software and need to authorize it' option and click next.



Choose to 'Authorize with ESRI now using the Internet.'



Click *Next >* and you will be asked for some authorization information. Make sure to Use Utah State University as the organization. Fill out the rest as appropriate for your situation:

Software Authorization Wizard

Authorization Information
We will use the following information to verify our records and authorize your use of the software. (* required field)

*First Name: Joni

*Last Name: McNeely

*Organization: Utah State University

Department: Information Technology

*Address 1: 1015 Old Main Hill

Address 2:

*City: Logan

*State/Province: UT

*Zip/Postal Code: 84322

*Location: United States

*Phone Number: 435-797-7313

*Email: joni.mcneely@usu.edu

Comment: Joe Wheaton
Optional user-defined authorization description.

< Back Next > Cancel

Make sure to specify that you are a student in the next screen.

Software Authorization Wizard

Authorization information (continued)
We will use the following information to verify our records and authorize your use of the software. (* required field)

*Your Organization: Education-Staff/Faculty

*Your Industry: Higher Education

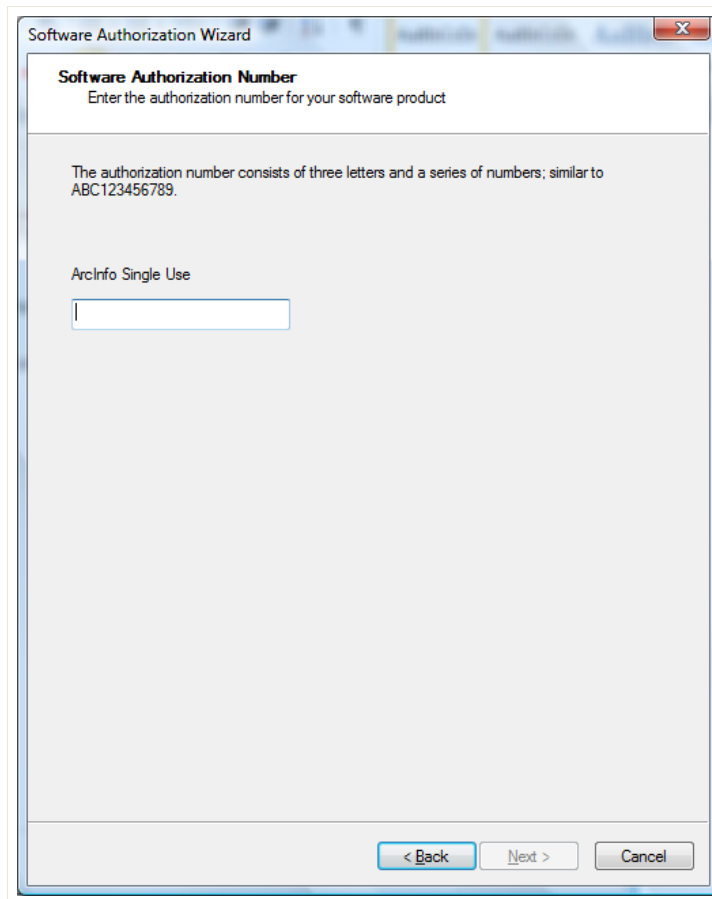
*Yourself: Educator

The personal information you supplied is protected under ESRI's privacy policy. If you want to view ESRI's privacy policy, click the View button below.

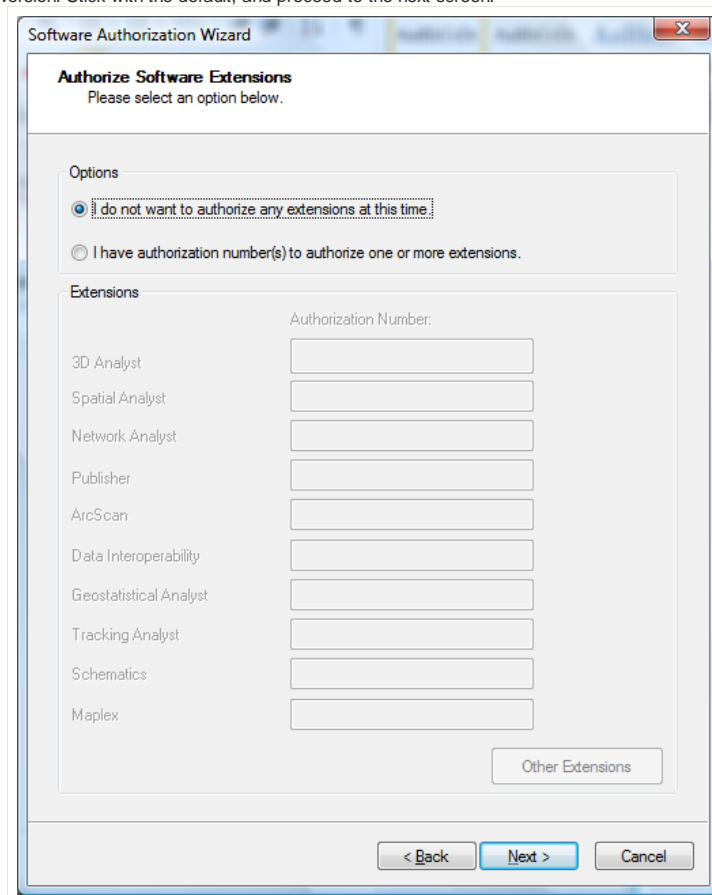
View...

< Back Next > Cancel

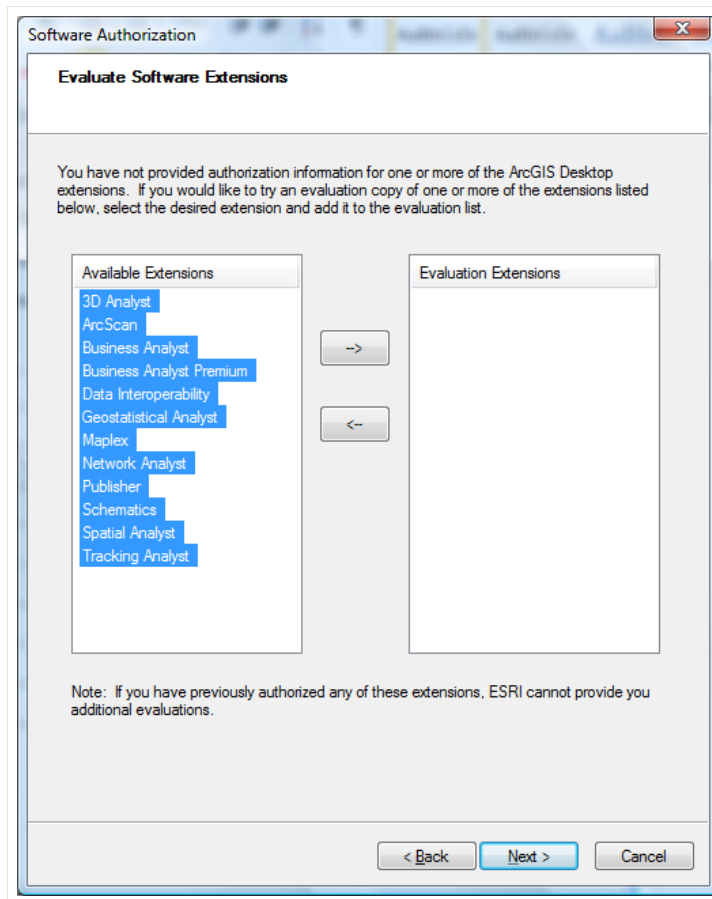
Finally it asks for the Authorization number. Enter in the EVA code from the DVD case and/or your email from ESRI:



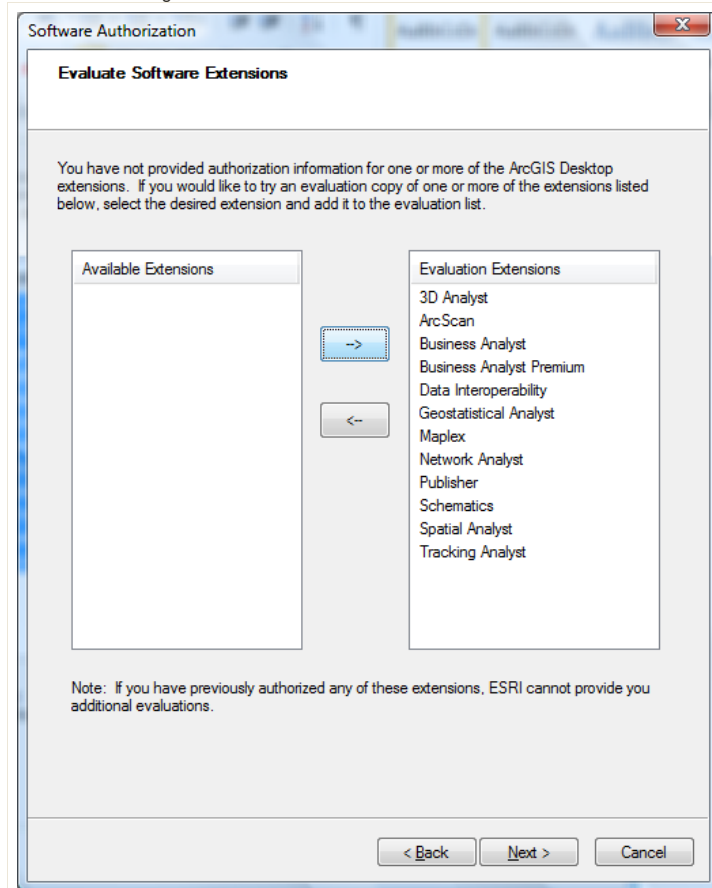
The next screen tends to confuse people. The extensions have already been installed, so you do not enter in licenses for these with the education version. Stick with the default, and proceed to the next screen.



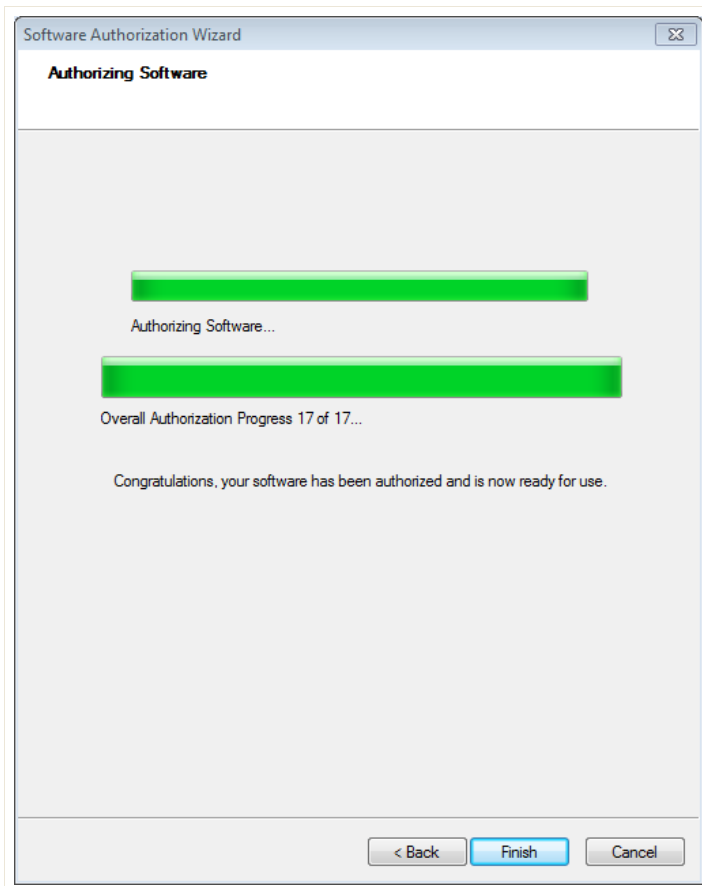
Here you want to include access (for one year) to all those extensions you installed. Highlight the extensions you want to evaluate:



Then use the --> to move them to the right hand side and hit next:



Now, you should see it communicating with ESRI to authorize the software and extensions (number will vary):



Your software should now be authenticated and ready for one year of use. Enjoy. Exit The ArcGIS Administrator and start ArcGIS to make sure it works. Note you will need to turn on the extensions in ArcGIS for them to be accessible (see [here](#) for help getting started).

THIS IS NOT AN OFFICIAL ESRI site! These instructions were compiled simply to help students who were having trouble installing Education Edition licenses. You may not use the Education Edition for any use other than that specified in the ESRI License Agreement.

Comments

You have no permission to add comments.



ET-AL Lab Site by Wheaton et al. (2009-2013) is licensed under a Creative Commons Attribution-NonCommercial-ShareAlike 3.0 Unported License.

[Sign in](#) | [Report Abuse](#) | [Print Page](#) | [Remove Access](#) | Powered By [Google Sites](#)