

FILE NAME:
Bld17-00,01,02

DRAWN BY:

REVISED:

SCALE:
NTS

GROSS AREA:
1,080 Sq.ft.

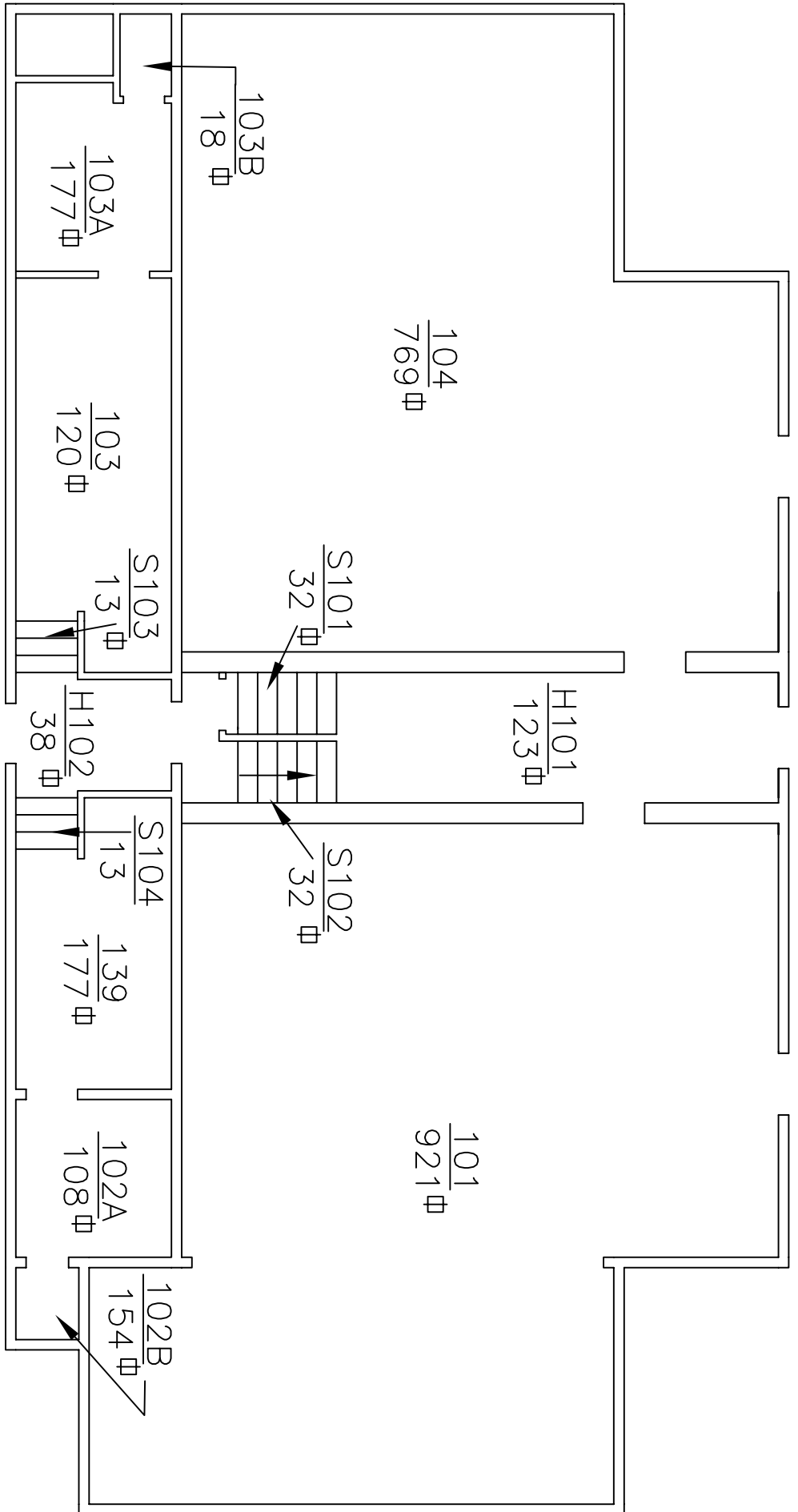
BLDG. NO.
017

SHEET NO.
1 of 4

WOU PLANNING OFFICE

ARNOLD ARMS
BASEMENT

WESTERN OREGON
UNIVERSITY



FIRST FLOOR



FILE NAME:
Bldg7-00,01,02

DRAWN BY:

REVISED:

WOU PLANNING OFFICE

ARNOLD ARMS
FIRST FLOOR

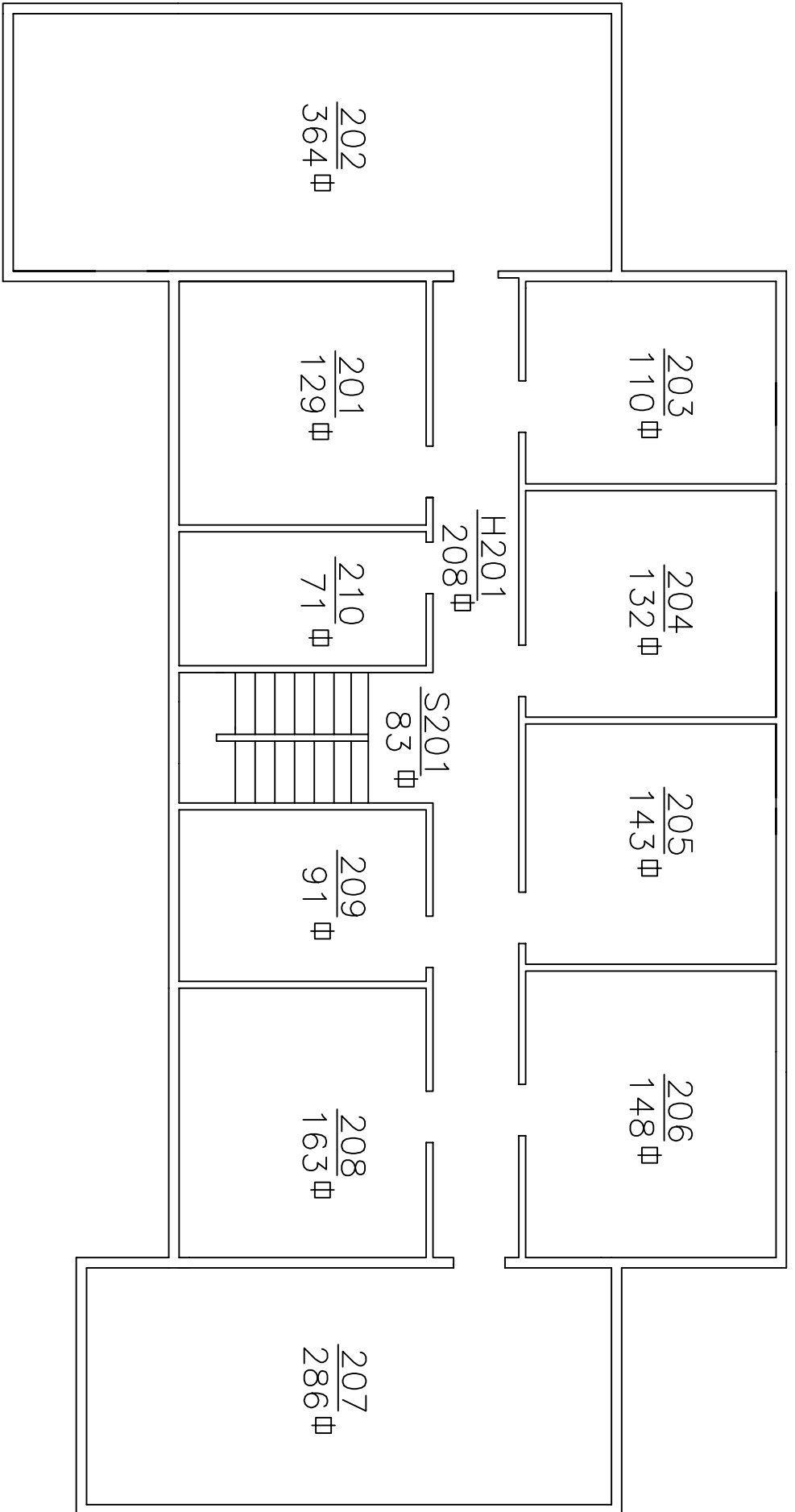
SCALE:
NTS

GROSS AREA:
2,587 Sq.ft.

BLDG. NO.
017

SHEET NO.
2 of 4

WESTERN OREGON
UNIVERSITY



SECOND FLOOR



FILE NAME:
Bld17-00,01,02

DRAWN BY:

REVISED:

WOU PLANNING OFFICE

ARNOLD ARMS
SECOND FLOOR

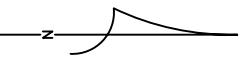
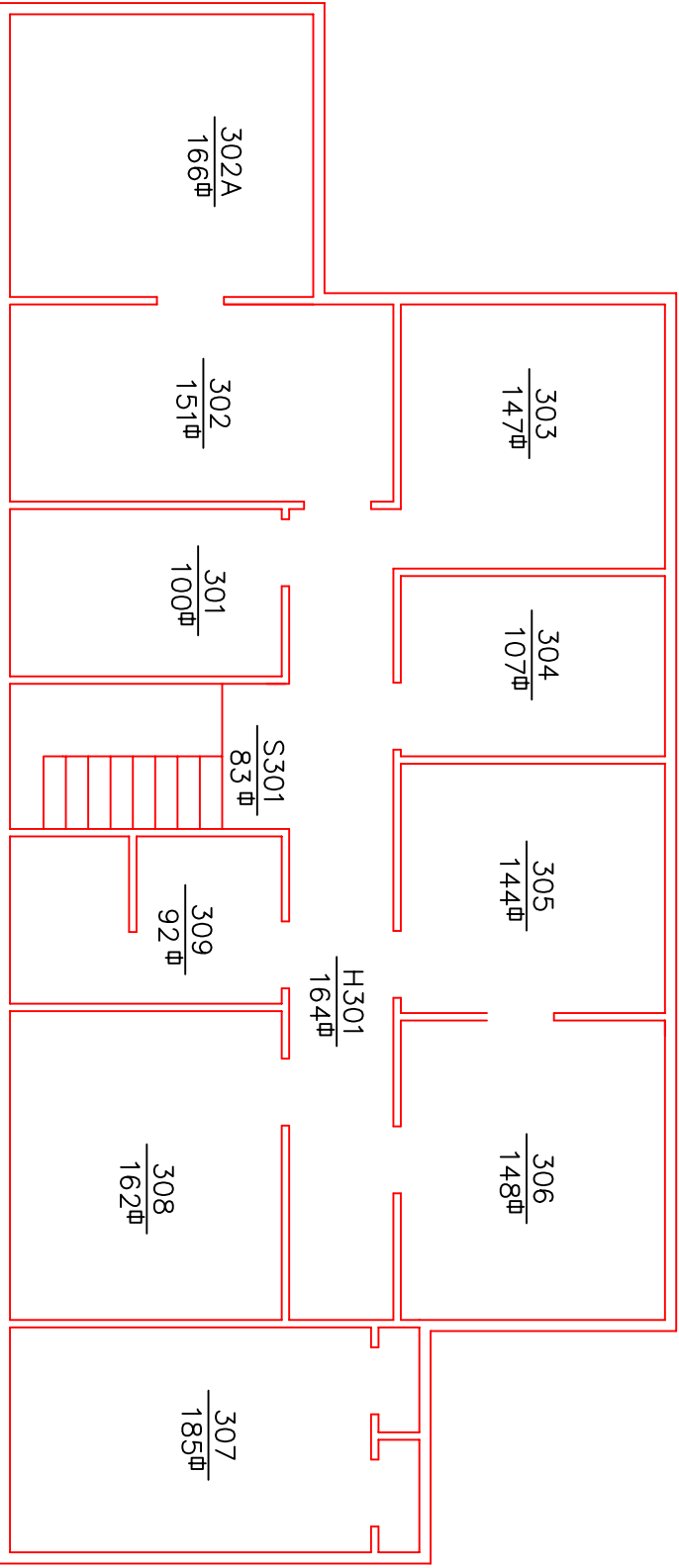
SCALE:
NTS

GROSS AREA:
2,191 Sq. ft.

BLDG. NO.
017

SHEET NO.
3 of 4

WESTERN OREGON
UNIVERSITY



FILE NAME:
Bld17-03

DRAWN BY:

REVISED:
11/05 DRL

WOU PLANNING OFFICE

ARNOLD ARMS
THIRD FLOOR

SCALE:
NTS

GROSS AREA:
1,803 Sq.ft.

BLDG. NO.
017

SHEET NO.
4 of 4

WESTERN OREGON
UNIVERSITY