

Quick Guide: Getting Started with WebCT

Step-by-Step

Notes

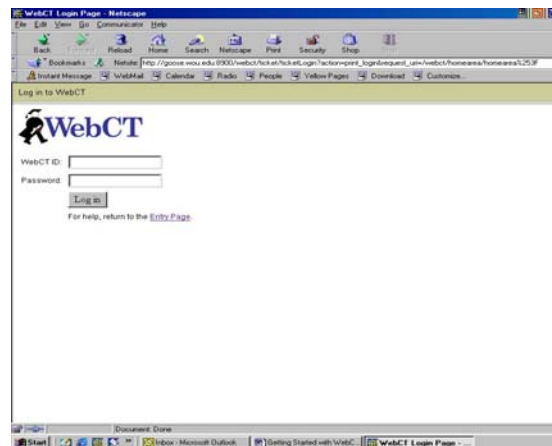
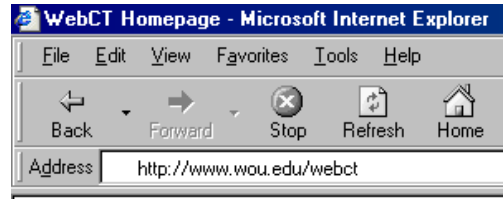
1. Log onto the Internet.
2. Type in the following URL:
www.wou.edu/webct

3. Enter your user name and password. In most cases, your WebCT I.D. will be the same as your network I.D, the one you use for computers on campus and for WOU email. Your password, however, will be a random five digit number provided to you by your instructor.

You will be immediately prompted to change the password to something else. Feel free to change it to whatever you want.

Note: If you have used WebCT at WOU in the past, then the password given to you by your instructor will not be correct. These are only default passwords. The password will be whatever you selected in the past.

4. Once inside, click on the name of your course located in the upper left side of this page to access your course **homepage**.



If you have problems getting into your course, please contact your instructor first for assistance. You can also contact Scott Carter, the WOU WebCT Administrator, at carters@wou.edu, or call the Technology Resource Center at 838-8965.