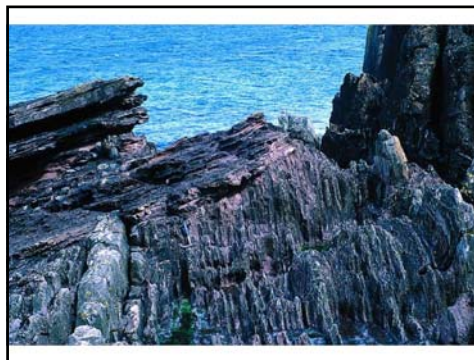
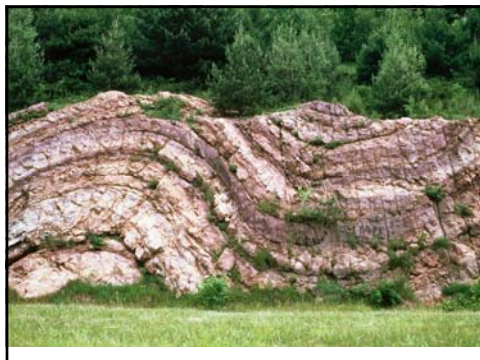
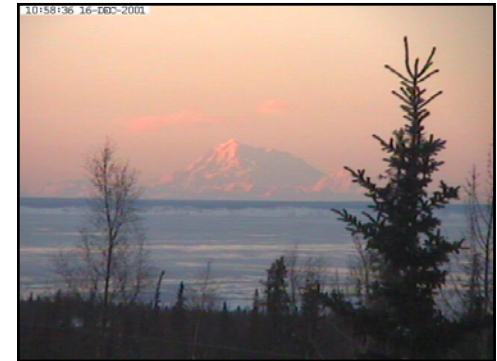


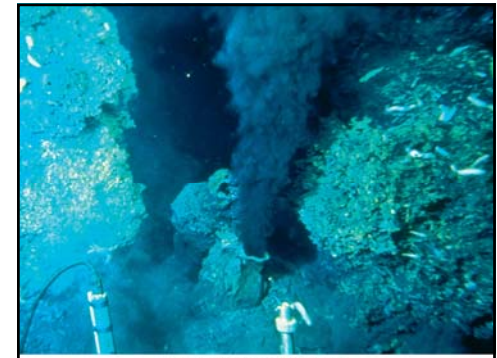
**Earth Science 104**

**Karen Brown**  
[www.wou.edu/~brownk](http://www.wou.edu/~brownk)

Beginning sixth year at WOU  
16 years college teaching experience  
Master of Science in Geology









Copyright © 2006 Pearson Prentice Hall, Inc.



Copyright © 2006 Pearson Prentice Hall, Inc.



Copyright © 2006 Pearson Prentice Hall, Inc.



Copyright © 2006 Pearson Prentice Hall, Inc.



Copyright © 2006 Pearson Prentice Hall, Inc.



Copyright © 2006 Pearson Prentice Hall, Inc.

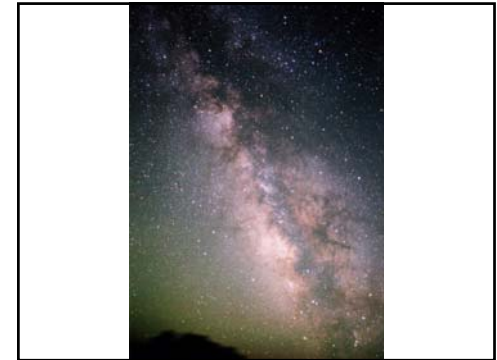
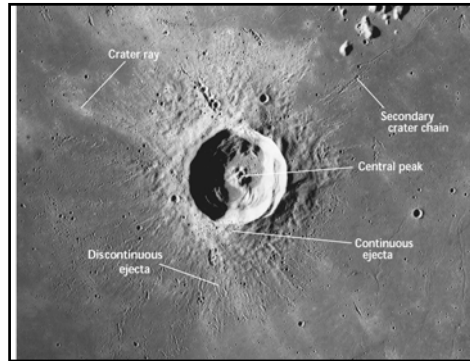


Copyright © 2006 Pearson Prentice Hall, Inc.

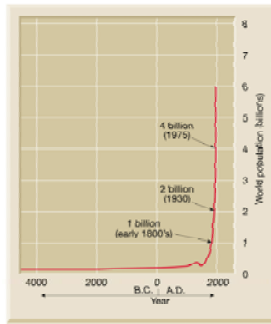


Copyright © 2006 Pearson Prentice Hall, Inc.





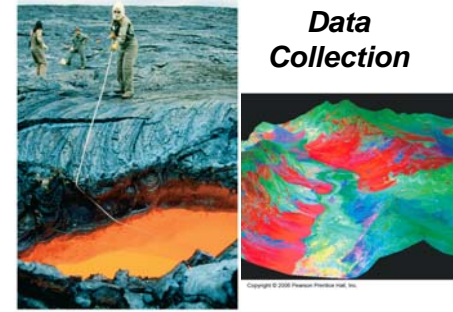
## Population Growth



## Scientific Inquiry

- Gather data
- Formulate plausible explanations
- Devise tests and predictions
- Revise, reject or accept explanations

## Data Collection



## Scientific Method

- Collect facts
- Develop hypotheses
- Test
- Review

## Hypothesis vs. Theory

- Hypothesis is an explanation that requires testing
- Theory has been tested, and is supported by the evidence, and predicts things not used to formulate the hypothesis
- Paradigm is a theory that explains wide ranging sets of observations

## Syllabus

- [www.wou.edu/~brownk](http://www.wou.edu/~brownk)

**Earth System Science I (ES 104) syllabus—Fall 2008**  
 Professor: Karen Brown  
 Phone: (503) 639-6201  
[karen.brown@wou.edu](mailto:karen.brown@wou.edu)

**Office:** Natural Science 213  
**Office Hours:** Monday and Tuesday 9:00 to 10:00 AM  
 Wednesday 12:00 to 1:00 PM or by appointment  
 Please e-mail me at [karen.brown@wou.edu](mailto:karen.brown@wou.edu) or call me at (503) 639-6201.  
 Please e-mail me at [karen.brown@wou.edu](mailto:karen.brown@wou.edu) or call me at (503) 639-6201.

**Goal:** Understand the character and formation of the Solar System, including the origin of life, and investigate the properties of Earth materials.

**Textbook:** Earth Systems (2nd ed.) by Edward C. Telford and Patricia A. Telford. 2008. Prentice Hall, Pearson Education, Inc. ISBN 0-321-50022-0. Please e-mail me at [karen.brown@wou.edu](mailto:karen.brown@wou.edu) or call me at (503) 639-6201.

**Grading:** The following chart contains the points required for grades in this class.

Points	Percent	Letter grade	Plus and minus
400-360	100-90%	A	Plus and minus
350-320	89-80%	B	grades only
310-280	79-70%	C	grades only
270-240	69-60%	D	grades only
Less than 240	Less than 60%	F	grades only

The points are distributed as follows:  
 Midterm exam: 75 points  
 Final exam: 125 points  
 Total: 200 points  
 (Note: as indicated on assignments, 100 points are required for a C grade.)

**YOUR BEST PASS: THE LABORATORY PORTION OF THIS COURSE WITH AT LEAST 80% TO PASS THIS CLASS.**

**Assessments:**  
 Exams: 150 points. The exams will have a combination of question types: some multiple choice, some short answer, some essay. Please refer to the syllabus for information on assessment and grading. You will have a significant amount of time to prepare. If you have an emergency situation or other situation that prevents you from attending an exam, please contact me ahead of time to make arrangements. Exams are generally not rescheduled. Requests for early final exams are subject to the Office of Student Affairs, in the case of illness and bereavement. If Student Affairs is unable to accommodate you, please contact me directly.

## Syllabus

- [www.wou.edu/~brownk](http://www.wou.edu/~brownk)

**Student activities: 100 points.** Throughout the term, there will be a number of in-class activities. By the end of the term, you are expected to earn a total of 100 points. These activities are designed to help you learn the material and to help you develop your skills. You will be expected to participate in these activities and to complete the assignments. You will be expected to participate in these activities and to complete the assignments. You will be expected to participate in these activities and to complete the assignments.

**Midterm exam: 75 points.** The midterm exam will be held on Monday, October 13, 2008, at 10:00 AM. The exam will consist of multiple choice, short answer, and essay questions. You will be expected to participate in this exam and to complete the assignments. You will be expected to participate in this exam and to complete the assignments. You will be expected to participate in this exam and to complete the assignments.

**Final exam: 125 points.** The final exam will be held on Friday, December 12, 2008, at 10:00 AM. The exam will consist of multiple choice, short answer, and essay questions. You will be expected to participate in this exam and to complete the assignments. You will be expected to participate in this exam and to complete the assignments. You will be expected to participate in this exam and to complete the assignments.

**Grading:** The following chart contains the points required for grades in this class.

Points	Percent	Letter grade	Plus and minus
400-360	100-90%	A	Plus and minus
350-320	89-80%	B	grades only
310-280	79-70%	C	grades only
270-240	69-60%	D	grades only
Less than 240	Less than 60%	F	grades only

**YOUR BEST PASS: THE LABORATORY PORTION OF THIS COURSE WITH AT LEAST 80% TO PASS THIS CLASS.**

**Assessments:**  
 Exams: 150 points. The exams will have a combination of question types: some multiple choice, some short answer, some essay. Please refer to the syllabus for information on assessment and grading. You will have a significant amount of time to prepare. If you have an emergency situation or other situation that prevents you from attending an exam, please contact me ahead of time to make arrangements. Exams are generally not rescheduled. Requests for early final exams are subject to the Office of Student Affairs, in the case of illness and bereavement. If Student Affairs is unable to accommodate you, please contact me directly.

## Office Door

- Notice the little sign: "IN CLASS See Schedule"
- May also say 'Gone See Schedule' 'Went for Coffee ETA: 'Downstairs Be Right Back' 'In NS017 Come Find Me' 'HERE Please Knock'



## Course Schedule

Date	Topic	Chapter / Page	Suggested Review Questions
29-Sep	Introduction to Earth Science 104	1	1-1, 1-15, 2-25
6-Oct	Earth's place in the cosmos, internal structure	1	9-12, 15-21
13-Oct	History of Astronomy	21	21-1, 21-2, 21-3, 21-4, 21-5
20-Oct	Celestial Moon, Earth-Moon System	21, 22	21-1, 21-2, 21-3, 21-4, 21-5, 21-6, 21-7, 21-8, 21-9, 21-10, 21-11, 21-12, 21-13, 21-14, 21-15, 21-16, 21-17, 21-18, 21-19, 21-20, 21-21, 21-22, 21-23, 21-24, 21-25, 21-26, 21-27, 21-28, 21-29, 21-30, 21-31, 21-32, 21-33, 21-34, 21-35, 21-36, 21-37, 21-38, 21-39, 21-40, 21-41, 21-42, 21-43, 21-44, 21-45, 21-46, 21-47, 21-48, 21-49, 21-50, 21-51, 21-52, 21-53, 21-54, 21-55, 21-56, 21-57, 21-58, 21-59, 21-60, 21-61, 21-62, 21-63, 21-64, 21-65, 21-66, 21-67, 21-68, 21-69, 21-70, 21-71, 21-72, 21-73, 21-74, 21-75, 21-76, 21-77, 21-78, 21-79, 21-80, 21-81, 21-82, 21-83, 21-84, 21-85, 21-86, 21-87, 21-88, 21-89, 21-90, 21-91, 21-92, 21-93, 21-94, 21-95, 21-96, 21-97, 21-98, 21-99, 21-100
27-Oct	Planets of our Solar System	22	22-1, 22-2, 22-3, 22-4, 22-5, 22-6, 22-7, 22-8, 22-9, 22-10, 22-11, 22-12, 22-13, 22-14, 22-15, 22-16, 22-17, 22-18, 22-19, 22-20, 22-21, 22-22, 22-23, 22-24, 22-25, 22-26, 22-27, 22-28, 22-29, 22-30, 22-31, 22-32, 22-33, 22-34, 22-35, 22-36, 22-37, 22-38, 22-39, 22-40, 22-41, 22-42, 22-43, 22-44, 22-45, 22-46, 22-47, 22-48, 22-49, 22-50, 22-51, 22-52, 22-53, 22-54, 22-55, 22-56, 22-57, 22-58, 22-59, 22-60, 22-61, 22-62, 22-63, 22-64, 22-65, 22-66, 22-67, 22-68, 22-69, 22-70, 22-71, 22-72, 22-73, 22-74, 22-75, 22-76, 22-77, 22-78, 22-79, 22-80, 22-81, 22-82, 22-83, 22-84, 22-85, 22-86, 22-87, 22-88, 22-89, 22-90, 22-91, 22-92, 22-93, 22-94, 22-95, 22-96, 22-97, 22-98, 22-99, 22-100
3-Nov	Major processes of Solar System, Light, Telescopes	22, 23	22-1, 22-2, 22-3, 22-4, 22-5, 22-6, 22-7, 22-8, 22-9, 22-10, 22-11, 22-12, 22-13, 22-14, 22-15, 22-16, 22-17, 22-18, 22-19, 22-20, 22-21, 22-22, 22-23, 22-24, 22-25, 22-26, 22-27, 22-28, 22-29, 22-30, 22-31, 22-32, 22-33, 22-34, 22-35, 22-36, 22-37, 22-38, 22-39, 22-40, 22-41, 22-42, 22-43, 22-44, 22-45, 22-46, 22-47, 22-48, 22-49, 22-50, 22-51, 22-52, 22-53, 22-54, 22-55, 22-56, 22-57, 22-58, 22-59, 22-60, 22-61, 22-62, 22-63, 22-64, 22-65, 22-66, 22-67, 22-68, 22-69, 22-70, 22-71, 22-72, 22-73, 22-74, 22-75, 22-76, 22-77, 22-78, 22-79, 22-80, 22-81, 22-82, 22-83, 22-84, 22-85, 22-86, 22-87, 22-88, 22-89, 22-90, 22-91, 22-92, 22-93, 22-94, 22-95, 22-96, 22-97, 22-98, 22-99, 22-100
14-Nov	Star, Stars	23, 24	23-1, 23-2, 23-3, 23-4, 23-5, 23-6, 23-7, 23-8, 23-9, 23-10, 23-11, 23-12, 23-13, 23-14, 23-15, 23-16, 23-17, 23-18, 23-19, 23-20, 23-21, 23-22, 23-23, 23-24, 23-25, 23-26, 23-27, 23-28, 23-29, 23-30, 23-31, 23-32, 23-33, 23-34, 23-35, 23-36, 23-37, 23-38, 23-39, 23-40, 23-41, 23-42, 23-43, 23-44, 23-45, 23-46, 23-47, 23-48, 23-49, 23-50, 23-51, 23-52, 23-53, 23-54, 23-55, 23-56, 23-57, 23-58, 23-59, 23-60, 23-61, 23-62, 23-63, 23-64, 23-65, 23-66, 23-67, 23-68, 23-69, 23-70, 23-71, 23-72, 23-73, 23-74, 23-75, 23-76, 23-77, 23-78, 23-79, 23-80, 23-81, 23-82, 23-83, 23-84, 23-85, 23-86, 23-87, 23-88, 23-89, 23-90, 23-91, 23-92, 23-93, 23-94, 23-95, 23-96, 23-97, 23-98, 23-99, 23-100
21-Nov	Stellar evolution, Galaxies	24	24-1, 24-2, 24-3, 24-4, 24-5, 24-6, 24-7, 24-8, 24-9, 24-10, 24-11, 24-12, 24-13, 24-14, 24-15, 24-16, 24-17, 24-18, 24-19, 24-20, 24-21, 24-22, 24-23, 24-24, 24-25, 24-26, 24-27, 24-28, 24-29, 24-30, 24-31, 24-32, 24-33, 24-34, 24-35, 24-36, 24-37, 24-38, 24-39, 24-40, 24-41, 24-42, 24-43, 24-44, 24-45, 24-46, 24-47, 24-48, 24-49, 24-50, 24-51, 24-52, 24-53, 24-54, 24-55, 24-56, 24-57, 24-58, 24-59, 24-60, 24-61, 24-62, 24-63, 24-64, 24-65, 24-66, 24-67, 24-68, 24-69, 24-70, 24-71, 24-72, 24-73, 24-74, 24-75, 24-76, 24-77, 24-78, 24-79, 24-80, 24-81, 24-82, 24-83, 24-84, 24-85, 24-86, 24-87, 24-88, 24-89, 24-90, 24-91, 24-92, 24-93, 24-94, 24-95, 24-96, 24-97, 24-98, 24-99, 24-100
28-Nov	Exam		
5-Dec	Continental Drift, Plate Tectonics, Plate Movement	7	7-1, 7-2, 7-3, 7-4, 7-5, 7-6, 7-7, 7-8, 7-9, 7-10, 7-11, 7-12, 7-13, 7-14, 7-15, 7-16, 7-17, 7-18, 7-19, 7-20, 7-21, 7-22, 7-23, 7-24, 7-25, 7-26, 7-27, 7-28, 7-29, 7-30, 7-31, 7-32, 7-33, 7-34, 7-35, 7-36, 7-37, 7-38, 7-39, 7-40, 7-41, 7-42, 7-43, 7-44, 7-45, 7-46, 7-47, 7-48, 7-49, 7-50, 7-51, 7-52, 7-53, 7-54, 7-55, 7-56, 7-57, 7-58, 7-59, 7-60, 7-61, 7-62, 7-63, 7-64, 7-65, 7-66, 7-67, 7-68, 7-69, 7-70, 7-71, 7-72, 7-73, 7-74, 7-75, 7-76, 7-77, 7-78, 7-79, 7-80, 7-81, 7-82, 7-83, 7-84, 7-85, 7-86, 7-87, 7-88, 7-89, 7-90, 7-91, 7-92, 7-93, 7-94, 7-95, 7-96, 7-97, 7-98, 7-99, 7-100
12-Dec	Plate Motion, Other Types, Evidence, Mechanisms	7	7-1, 7-2, 7-3, 7-4, 7-5, 7-6, 7-7, 7-8, 7-9, 7-10, 7-11, 7-12, 7-13, 7-14, 7-15, 7-16, 7-17, 7-18, 7-19, 7-20, 7-21, 7-22, 7-23, 7-24, 7-25, 7-26, 7-27, 7-28, 7-29, 7-30, 7-31, 7-32, 7-33, 7-34, 7-35, 7-36, 7-37, 7-38, 7-39, 7-40, 7-41, 7-42, 7-43, 7-44, 7-45, 7-46, 7-47, 7-48, 7-49, 7-50, 7-51, 7-52, 7-53, 7-54, 7-55, 7-56, 7-57, 7-58, 7-59, 7-60, 7-61, 7-62, 7-63, 7-64, 7-65, 7-66, 7-67, 7-68, 7-69, 7-70, 7-71, 7-72, 7-73, 7-74, 7-75, 7-76, 7-77, 7-78, 7-79, 7-80, 7-81, 7-82, 7-83, 7-84, 7-85, 7-86, 7-87, 7-88, 7-89, 7-90, 7-91, 7-92, 7-93, 7-94, 7-95, 7-96, 7-97, 7-98, 7-99, 7-100
19-Dec	Earthquakes, Seismology	8	8-1, 8-2, 8-3, 8-4, 8-5, 8-6, 8-7, 8-8, 8-9, 8-10, 8-11, 8-12, 8-13, 8-14, 8-15, 8-16, 8-17, 8-18, 8-19, 8-20, 8-21, 8-22, 8-23, 8-24, 8-25, 8-26, 8-27, 8-28, 8-29, 8-30, 8-31, 8-32, 8-33, 8-34, 8-35, 8-36, 8-37, 8-38, 8-39, 8-40, 8-41, 8-42, 8-43, 8-44, 8-45, 8-46, 8-47, 8-48, 8-49, 8-50, 8-51, 8-52, 8-53, 8-54, 8-55, 8-56, 8-57, 8-58, 8-59, 8-60, 8-61, 8-62, 8-63, 8-64, 8-65, 8-66, 8-67, 8-68, 8-69, 8-70, 8-71, 8-72, 8-73, 8-74, 8-75, 8-76, 8-77, 8-78, 8-79, 8-80, 8-81, 8-82, 8-83, 8-84, 8-85, 8-86, 8-87, 8-88, 8-89, 8-90, 8-91, 8-92, 8-93, 8-94, 8-95, 8-96, 8-97, 8-98, 8-99, 8-100
26-Dec	Earthquake Effects	8	8-1, 8-2, 8-3, 8-4, 8-5, 8-6, 8-7, 8-8, 8-9, 8-10, 8-11, 8-12, 8-13, 8-14, 8-15, 8-16, 8-17, 8-18, 8-19, 8-20, 8-21, 8-22, 8-23, 8-24, 8-25, 8-26, 8-27, 8-28, 8-29, 8-30, 8-31, 8-32, 8-33, 8-34, 8-35, 8-36, 8-37, 8-38, 8-39, 8-40, 8-41, 8-42, 8-43, 8-44, 8-45, 8-46, 8-47, 8-48, 8-49, 8-50, 8-51, 8-52, 8-53, 8-54, 8-55, 8-56, 8-57, 8-58, 8-59, 8-60, 8-61, 8-62, 8-63, 8-64, 8-65, 8-66, 8-67, 8-68, 8-69, 8-70, 8-71, 8-72, 8-73, 8-74, 8-75, 8-76, 8-77, 8-78, 8-79, 8-80, 8-81, 8-82, 8-83, 8-84, 8-85, 8-86, 8-87, 8-88, 8-89, 8-90, 8-91, 8-92, 8-93, 8-94, 8-95, 8-96, 8-97, 8-98, 8-99, 8-100
2-Jan	Moon	2	2-1, 2-2, 2-3, 2-4, 2-5, 2-6, 2-7, 2-8, 2-9, 2-10, 2-11, 2-12, 2-13, 2-14, 2-15, 2-16, 2-17, 2-18, 2-19, 2-20, 2-21, 2-22, 2-23, 2-24, 2-25, 2-26, 2-27, 2-28, 2-29, 2-30, 2-31, 2-32, 2-33, 2-34, 2-35, 2-36, 2-37, 2-38, 2-39, 2-40, 2-41, 2-42, 2-43, 2-44, 2-45, 2-46, 2-47, 2-48, 2-49, 2-50, 2-51, 2-52, 2-53, 2-54, 2-55, 2-56, 2-57, 2-58, 2-59, 2-60, 2-61, 2-62, 2-63, 2-64, 2-65, 2-66, 2-67, 2-68, 2-69, 2-70, 2-71, 2-72, 2-73, 2-74, 2-75, 2-76, 2-77, 2-78, 2-79, 2-80, 2-81, 2-82, 2-83, 2-84, 2-85, 2-86, 2-87, 2-88, 2-89, 2-90, 2-91, 2-92, 2-93, 2-94, 2-95, 2-96, 2-97, 2-98, 2-99, 2-100
9-Jan	Rock Cycle, Igneous Rocks, Mineral Resources	9	9-1, 9-2, 9-3, 9-4, 9-5, 9-6, 9-7, 9-8, 9-9, 9-10, 9-11, 9-12, 9-13, 9-14, 9-15, 9-16, 9-17, 9-18, 9-19, 9-20, 9-21, 9-22, 9-23, 9-24, 9-25, 9-26, 9-27, 9-28, 9-29, 9-30, 9-31, 9-32, 9-33, 9-34, 9-35, 9-36, 9-37, 9-38, 9-39, 9-40, 9-41, 9-42, 9-43, 9-44, 9-45, 9-46, 9-47, 9-48, 9-49, 9-50, 9-51, 9-52, 9-53, 9-54, 9-55, 9-56, 9-57, 9-58, 9-59, 9-60, 9-61, 9-62, 9-63, 9-64, 9-65, 9-66, 9-67, 9-68, 9-69, 9-70, 9-71, 9-72, 9-73, 9-74, 9-75, 9-76, 9-77, 9-78, 9-79, 9-80, 9-81, 9-82, 9-83, 9-84, 9-85, 9-86, 9-87, 9-88, 9-89, 9-90, 9-91, 9-92, 9-93, 9-94, 9-95, 9-96, 9-97, 9-98, 9-99, 9-100
16-Jan	Volcanoes	9	9-1, 9-2, 9-3, 9-4, 9-5, 9-6, 9-7, 9-8, 9-9, 9-10, 9-11, 9-12, 9-13, 9-14, 9-15, 9-16, 9-17, 9-18, 9-19, 9-20, 9-21, 9-22, 9-23, 9-24, 9-25, 9-26, 9-27, 9-28, 9-29, 9-30, 9-31, 9-32, 9-33, 9-34, 9-35, 9-36, 9-37, 9-38, 9-39, 9-40, 9-41, 9-42, 9-43, 9-44, 9-45, 9-46, 9-47, 9-48, 9-49, 9-50, 9-51, 9-52, 9-53, 9-54, 9-55, 9-56, 9-57, 9-58, 9-59, 9-60, 9-61, 9-62, 9-63, 9-64, 9-65, 9-66, 9-67, 9-68, 9-69, 9-70, 9-71, 9-72, 9-73, 9-74, 9-75, 9-76, 9-77, 9-78, 9-79, 9-80, 9-81, 9-82, 9-83, 9-84, 9-85, 9-86, 9-87, 9-88, 9-89, 9-90, 9-91, 9-92, 9-93, 9-94, 9-95, 9-96, 9-97, 9-98, 9-99, 9-100
23-Jan	Intrusive Processes, Plate Tectonics and Magnetism	9	9-1, 9-2, 9-3, 9-4, 9-5, 9-6, 9-7, 9-8, 9-9, 9-10, 9-11, 9-12, 9-13, 9-14, 9-15, 9-16, 9-17, 9-18, 9-19, 9-20, 9-21, 9-22, 9-23, 9-24, 9-25, 9-26, 9-27, 9-28, 9-29, 9-30, 9-31, 9-32, 9-33, 9-34, 9-35, 9-36, 9-37, 9-38, 9-39, 9-40, 9-41, 9-42, 9-43, 9-44, 9-45, 9-46, 9-47, 9-48, 9-49, 9-50, 9-51, 9-52, 9-53, 9-54, 9-55, 9-56, 9-57, 9-58, 9-59, 9-60, 9-61, 9-62, 9-63, 9-64, 9-65, 9-66, 9-67, 9-68, 9-69, 9-70, 9-71, 9-72, 9-73, 9-74, 9-75, 9-76, 9-77, 9-78, 9-79, 9-80, 9-81, 9-82, 9-83, 9-84, 9-85, 9-86, 9-87, 9-88, 9-89, 9-90, 9-91, 9-92, 9-93, 9-94, 9-95, 9-96, 9-97, 9-98, 9-99, 9-100
30-Jan	Video: Birth of a Theory		
6-Feb	Rock Deformation	10	10-1, 10-2, 10-3, 10-4, 10-5, 10-6, 10-7, 10-8, 10-9, 10-10, 10-11, 10-12, 10-13, 10-14, 10-15, 10-16, 10-17, 10-18, 10-19, 10-20, 10-21, 10-22, 10-23, 10-24, 10-25, 10-26, 10-27, 10-28, 10-29, 10-30, 10-31, 10-32, 10-33, 10-34, 10-