

ROOM SPECS: BARNUM

Each room in Barnum is equipped with 3 extra long single beds (Mattresses are 80" long). One wardrobe unit which provides wardrobe space, and 3 drawers for each student. Barnum rooms also provide a desk area, bookshelf and chair for each student, a small living area furnished with a couch, chair and a floor lamp. All Barnum units share an adjoining double bath.

TOTAL SQ. FOOTAGE:

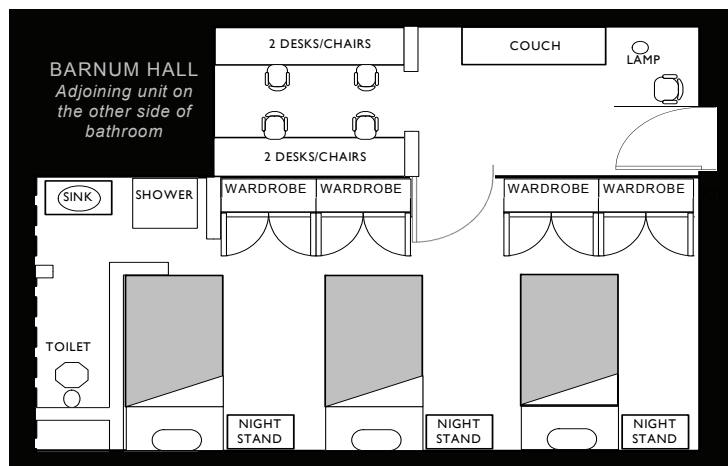
Approximately 375 square feet - Room dimensions may vary

DESK:

HEIGHT: 2' 7"
DESKTOP WIDTH: 7'
DESKTOP DEPTH: 2'
MOVEABLE?: No

WARDROBE:

HEIGHT: 6' 10"
DEPTH OF UNIT: 2'
WIDTH: 3'
OF DRAWERS: 2
ROOM ON TOP: Yes
HOW MUCH?: 1' 5"
MOVEABLE?: No



BED:

WIDTH: 3' 6"
LENGTH: 6' 10"
MOVEABLE: Yes
STACKABLE: Yes, with restrictions
STORAGE BENEATH: Yes, variable

NIGHTSTAND:

HEIGHT: 29.5"
WIDTH: 24"
DEPTH: 16"
One Adjustable Shelf