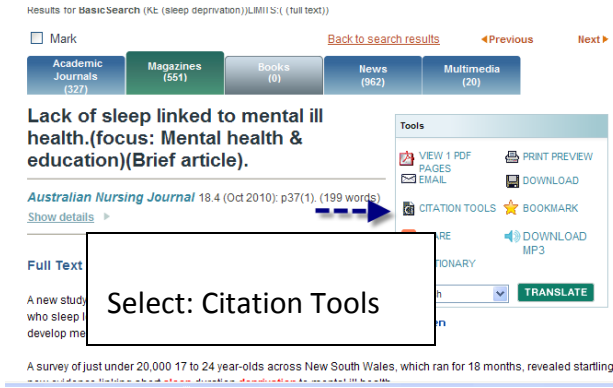
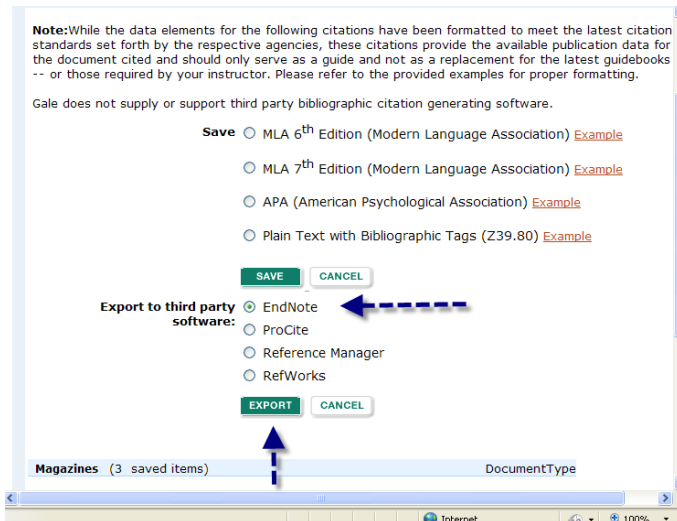


Exporting Citation to EasyBib – From a Gale database)

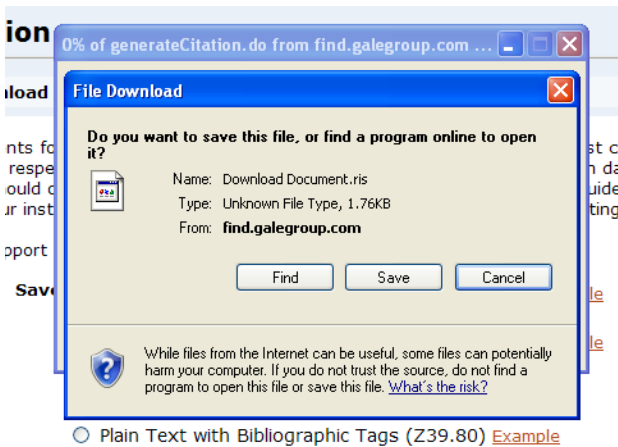
From Individual Article:



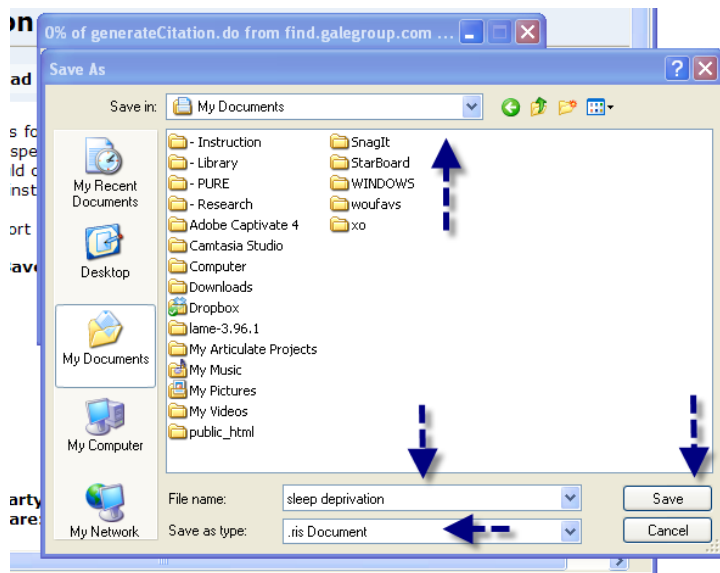
From Marked Items:



From Export to third party software:
Select: Endnote
Select: Export



Select: Save

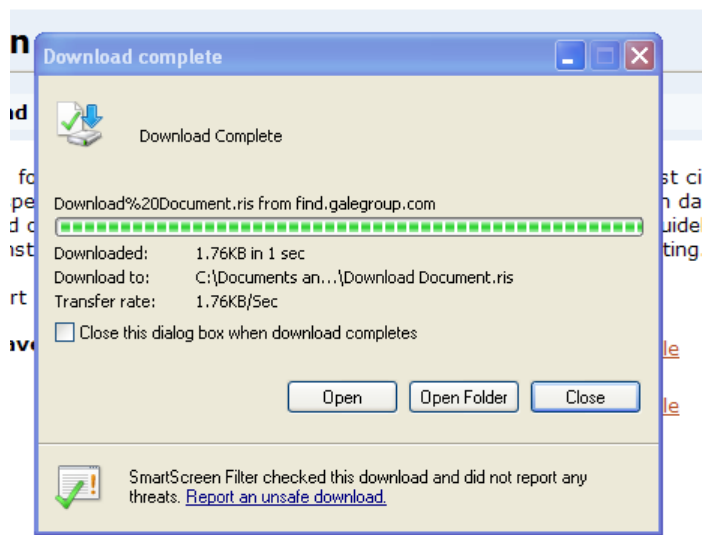


Select where you would like to save the file

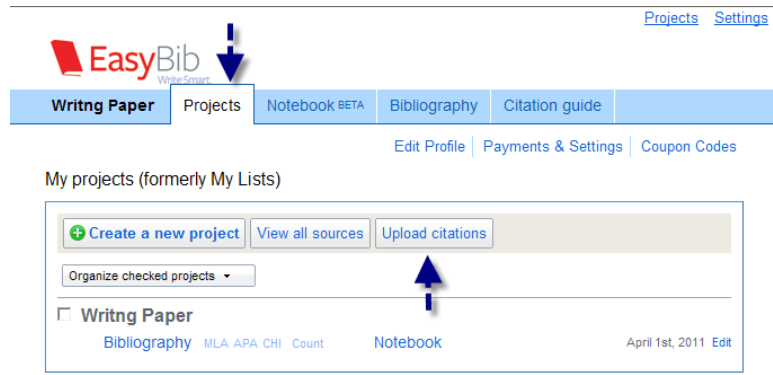
Change file name to something you will recognize

Make sure Save as Type is a .ris Document

Select: Save



Select: Close



Open up Easy Bib

Select: Projects

Select: Upload Citations

EasyBib: Free Bibliography Maker - MLA, APA, Chicago...

EasyBib Write Smart

Writing Paper Projects Notebook APA Bibliography

Import Database Files (See demo videos)

Upload your file (.ris, .txt, & .bib only)

Browse...

Import to the following list:

Writing Paper

Import

This feature is in beta. Please contact us if you have any questions.

Instructions

- EasyBib accepts Bibtext (.bib) and Endnote (.ris) files. You can upload up to 500 citations per file. For example, see ProQuest, JSTOR, EBSCO, and Gale tutorials.
- Often the raw citation information from databases is not properly formatted. Please review your citations after they import. Watch out for improperly capitalized authors and titles for your citation style, and obvious grammar & punctuation errors.

Choose File to Upload

Look in: Desktop

Sleep Deprivation

The Development of Ideal Body Image Perceptions in the United States

Women Weight and Age Social Comparison to Magazine Images Across the Lifespan

WOU Banner

WOU Directory

WOU Terminal Server

My Recent Documents

Desktop

My Documents

My Computer

My Network Places

File name: Sleep Deprivation

Files of type: All Files (*.*)

Open

Cancel

Select: Browse

Find the saved .ris file of the article citation on your computer

Select: Open

Select the drop down box from Import to the following list

Choose a project to import citations

Select: Import

File status

Type	Status	View
Import sleep deprivation.ris	Queued (Reload to update)	

Select: Reload to update

File status

Type	Status	View
Import sleep deprivation.ris	Finished	Show bibliography

Select: Show bibliography

Cite as: Website Book Newspaper Journal Database All 58 options

Autocite | Manual entry | Help

MLA | APA | Chicago/Turabian

Enter website address or keywords to cite. Cite this

Your Bibliography

Save as Word Doc Save as Google doc

Copy & paste E-mail Share

Select: All, None Organize checked citations

MLA 6 | MLA 7 | APA | Chicago/Turabian

Fenzl, T., Touma, C., Romanowski, C. P., Ruschel, J., Holsboer, F., Landgraf, R., ...

Yassouridis, A. (2011, March 24). Sleep disturbances in highly stress reactive mice: Modeling endophenotypes of major depression (Research article). *BMC Neuroscience*, 12, 29. Retrieved from http://find.galegroup.com/gtx/infomark.do?&contentSet=IAC- Documents&type=retrieve&tabID=T002&prodId=AONE&docId=A252895535&source=gale&srprod=AONE&userGroupName=oregon_western&version=1.0

Magazine Article Tags Parenthetical Edit Delete

When exporting citations from a Gale Database, the citations will be cited as a website

To change to a database citation

Select: Edit

Just fill out what you know. We'll format it correctly.

Advanced Edit Use this if you would like to edit your citation directly in a textbox.

Search for article: [Autocite!](#)
Type in the article name you are looking for! Powered by HighBeam

Medium: In print Online Online database ←

Source was: Published directly online
 Originally in print

Source type: [▼](#)
Change the source type if necessary.

Article title:

Contributors: [Remove](#)

Select: Online database

Magazine publication info

Magazine title:

Date published:
Day Month Year

Pages: Pages are nonconsecutive
Start End

Online database publication info

Database: [Help](#) ←

Date accessed: [Today](#)
Day Month Year

URL:

Note: MLA 7 says to leave out the URL unless the source cannot be located without it or if instructor requires it.

[Add Annotation](#)

Enter in name of database

Enter in the date accessed

Select Update citation

[Update citation](#) ←

Citation updated:

[See in list](#) | [Edit citation](#)

Fenzl, Thomas, Chadi Touma, Christoph PN. Romanowski, Jorg Ruschel, Florian Holsboer, Rainer Landgraf, Mayumi Kimura, and Alexander Yassouridis. "Sleep Disturbances in Highly Stress Reactive Mice: Modeling Endophenotypes of Major Depression.(Research Article)." *BMC Neuroscience* 24 Mar. 2011: 29. *Academic OneFile*. Web. 6 Apr. 2011.