



Fall 2008 Enrollment Fact Sheet
Oregon University System
Based on enrollment at Fall Term 4th week 2008
November 13, 2008

Overview

- Enrollment growth (headcount) for the Oregon University System (OUS) in fall 2008 increased **significantly by 5.2% over 2007 to 86,546 students**, an increase of almost 4,300 students. This compares to a fall 2007 annual increase of 1.5% and 1,247 additional students. Total enrollment is at an all time high for the System, and at six of the seven OUS campuses and the branch campus.
- **Undergraduate enrollment increased 5.4% to 71,022 students** in fall 2008, compared to **67,403** students in fall 2007. The number of newly admitted freshmen (does not include transfers) increased by 7.7% to 11,575. Enrollment of first time freshmen from Oregon increased by 3.3%, up from last year's increase of 2.1%.
- **Graduate student enrollment increased 4.6% to 15,524 students** in fall 2008, compared to 14,846 students in fall 2007. The increase includes both admitted and non-admitted students at the Masters level. Many of these students are improving their employability during this downturn in the economy.
- **Student diversity** showed an increase of 8.5% in fall 2008 compared with an increase of 4.5% in fall 2007. Students of color now constitute 14.9% of the student body or 12,860 students (with an additional 9.8% of unknown ethnicity) compared with 11,853 in fall 2007. Hispanic/Latino students had enrollment growth of 13.2%. Asian/Pacific American student enrollment increased by 6.5%. African American student enrollment increased by 7.5% over the prior year. American Indian/Alaska Native student enrollment increased by 5.0%. Caucasian student enrollment increased by 4.1% from 2007 to 2008.
- **International students** increased by 8.9% in 2008 to a total of 4,410 students, compared with last year's increase of 3.0%.

Table 1: 10-Year Enrollment Trend for the OUS		
10-year increase=33.2%; 5-year increase=8.8%; 2-year increase=6.8%		
Year	Total Headcount Enrollment	Percent increase from prior year
1998	64,989	+ 1.3%
1999	67,347	+ 3.6%
2000	69,508	+ 3.2%
2001	73,883	+ 6.3%
2002	78,111	+ 5.7%
2003	79,558	+ 1.9%
2004	80,066	+ 0.6%
2005	80,888	+ 1.0%
2006	81,002	+ 0.14%
2007	82,249	+ 1.5%
2008	86,546	+ 5.2%

2008 Enrollment Fact Sheet

- Fall **FTE enrollment**¹ (Full Time Equivalent students), increased by 5.3% or 3,612 students system-wide to a total of 71,315 compared to a increase of 0.9% or 592 students in 2007. Undergraduate FTE increased by 5.9%, and graduate student FTE increased by 2.8% from the prior year.
- The **ten-year growth** for the Oregon University System has **outpaced national averages**, increasing 33.2% since 1998, up 21,557 students. Three universities have 10-year increases exceeding this average: Portland State University increased 53.7% in that time; Eastern Oregon University increased 49.0%; and Oregon State University increased by 33.7%.

Enrollment Factors

- Significant increases in state funding for higher education during the 2007-2009 legislative session brought hope and confidence to students that the state's commitment to higher education will provide them with access to affordable programs and high quality faculty over the course of their undergraduate studies. Nonresident undergraduates now compare Oregon favorably to their own state's public institutions.
- As part of his strong commitment to education, Oregon Governor Kulongoski, working with the Board of Higher Education and others, created the Shared Responsibility Model of the Oregon Opportunity Grant (OOG), doubling state need-based aid for undergraduates, including part-time students for the first time, and making moderate-income Oregonians also eligible for the first time. Amounts vary depending on student need, and require students to assume some of the responsibility for paying for their education through some combination of working, borrowing, savings, or scholarships. The new OOG has resulted in more affordable postsecondary education, and is expected to lead to lower or no borrowing and fewer work hours to cover students' college costs. Preliminary numbers from OUS show the number of OOG recipients grew from 8,476 in fall 2007 to 15,433 in fall 2008, with award amounts increasing from \$13.4 million to \$33.8 million.
- Postsecondary education is seen as the path to economic prosperity for high school graduates. After declining steadily from a 2001 freshman participation rate² of 24.1%, OUS freshman participation rate is continues a slow climb to a preliminary 2008 rate of 21.0%.
- The number of new transfer students is growing once again after seeing a decline the past few years. This follows the enrollment patterns at Oregon community colleges where enrollment peaked in 2001-02 and declined as much as 10% over the next four years. In 2007 the Oregon Opportunity Grant was awarded to part time students, and the increases helped community college enrollment grow. Also, efforts by the Unified Education Enterprise to smooth the transition from community college to university are having an impact.
- Graduate enrollment is also subject to the changes in the economy, especially for non-admitted graduates who are traditionally working professionals improving their job qualifications. Masters and non-admitted graduate enrollment is up, however doctoral enrollment continues a six year stable trend. While an increase in graduates is a good sign for the future of Oregon's economy, there is concern that a failure to grow doctoral programs will affect Oregon's competitiveness for

¹ Full Time Equivalence (FTE) measures the total credit-bearing activity of a campus. The full time equivalent for an undergraduate is 15 credit hours per term or 45 credit hours per year, for a master's or professional student the number is 12 credit hours per term or 36 credit hours per year, and for a doctoral student the number is 9 credit hours per term or 27 credit hours per year.

² The freshman participation rate is the ratio of OUS first-time freshmen from Oregon high schools (regardless of year of graduation) to Oregon high school graduates of the previous school year.

2008 Enrollment Fact Sheet

research grants and the ability to attract and retain faculty which may, in time, have an effect on Oregon's economic growth through reduced capacity to bring innovations and new technologies to benefit Oregon's economy.

Additional Data Tables

Table 2:								
Total OUS Fall Headcount and FTE Enrollment, 2008 Compared to 2007								
(Fall 4th week)								
	Fall 2008		Fall 2007		Headcount Change		FTE Change	
	Headcount	FTE	Headcount	FTE	Number	Percent	Number	Percent
Eastern Oregon University	3,666	2,389	3,433	2,294	233	6.8	95	4.1
Oregon Institute of Technology	3,525	2,381	3,318	2,267	207	6.2	114	5.0
Oregon State University – Corvallis	20,320	18,487	19,753	18,110	567	2.9	378	2.1
Oregon State University – Cascades	510	280	497	272	13	2.6	8	3.1
Portland State University	26,587	18,753	24,999	17,299	1,588	6.4	1,454	8.4
Southern Oregon University	5,082	3,851	4,836	3,765	246	5.1	86	2.3
University of Oregon	21,507	20,762	20,376	19,496	1,131	5.6	1,266	6.5
Western Oregon University	5,349	4,412	5,037	4,201	312	6.2	212	5.0
Total	86,546	71,315	82,249	67,703	4,297	5.2	3,612	5.3

Source: OUS Institutional Research Services, Report ERCH-01, 11/03/08

Table 3:					
Fall 2008 4th Week Enrollment by Student Level					
Student Level	2008	2007	1998	Percent Change	
				One Year	Ten years
Admitted Undergraduates	66,206	63,054	47,658	5.0%	38.9%
Nonadmitted Undergraduates	4,816	4,349	3,810	10.7%	26.4%
Total Undergraduates	71,022	67,403	51,468	5.4%	38.0%
Masters, other graduates	9,063	8,669	7,457	4.5%	21.5%
Law	539	537	501	0.4%	7.6%
Pharmacy *	356	339	-	5.0%	N/A
Veterinary Medicine	196	192	67	2.1%	192.5%
Doctoral	2,678	2,681	2,360	-0.1%	13.5%
Nonadmitted Graduates	2,692	2,428	3,136	10.9%	-14.2%
Total Graduates	15,524	14,846	13,521	4.6%	14.8%

2008 Enrollment Fact Sheet

Total	86,546	82,249	64,989	5.2%	33.2%
* NOTE: Pharmacy became a professional program in Fall 1999					
Source: OUS Institutional Research Services, Report ERCH-01, 11/03/08					

Table 4:

Newly Admitted Undergraduates

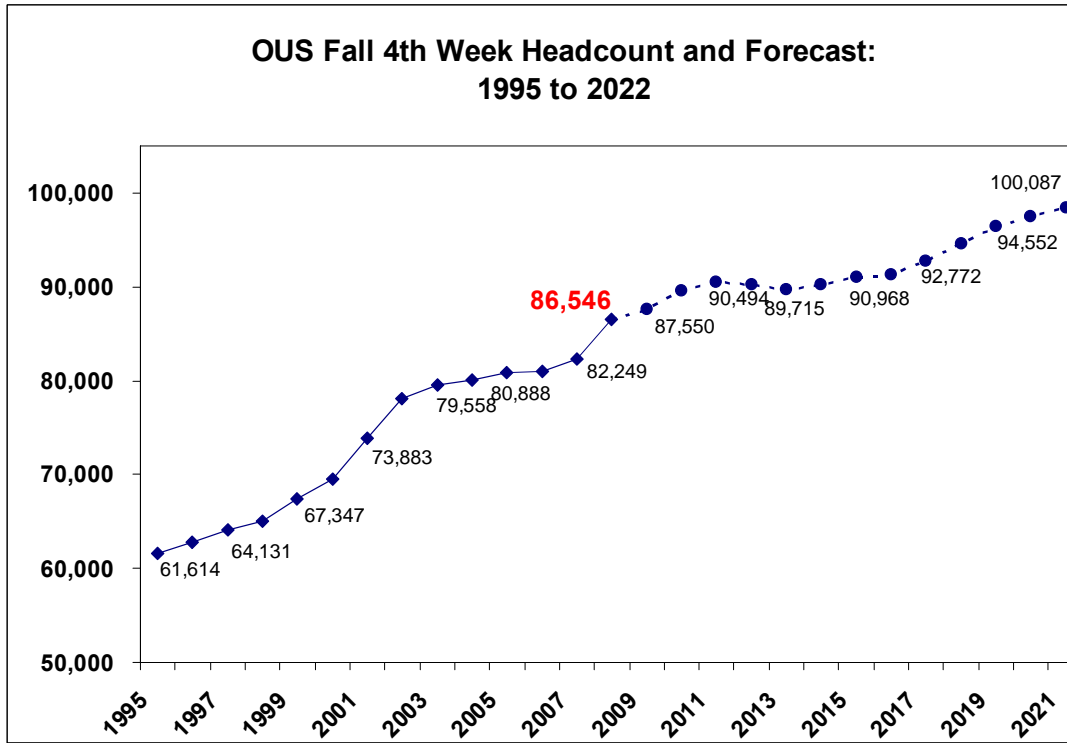
	Fall 2008			Fall 2007			Change		
	Fresh.	Trans.	Total	Fresh.	Trans.	Total	Fresh.	Trans.	Total
Eastern Oregon University	351	529	880	343	456	799	8	73	81
Oregon Institute of Technology	362	425	787	288	467	755	74	-42	32
Oregon State University - Corvallis	3,191	1,221	4,412	3,141	1,095	4,236	50	126	176
Oregon State University - Cascades	-	100	100	-	80	80	0	20	20
Portland State University	1,768	2,906	4,674	1,672	2,530	4,202	96	376	472
Southern Oregon University	709	480	1,189	747	521	1,268	-38	-41	-79
University of Oregon	4,260	1,158	5,418	3,587	1,161	4,748	673	-3	670
Western Oregon University	934	562	1,496	970	465	1,435	-36	97	61
Total	11,575	7,381	18,956	10,748	6,775	17,523	827	606	1,433
NOTE: 'Transfers' excludes postbaccalaureate undergraduates and graduate students							7.7%	8.9%	8.2%
Source: OUS Institutional Research Services, First Time Freshmen Reports Table 4a, 11/03/08.									

Table 5:

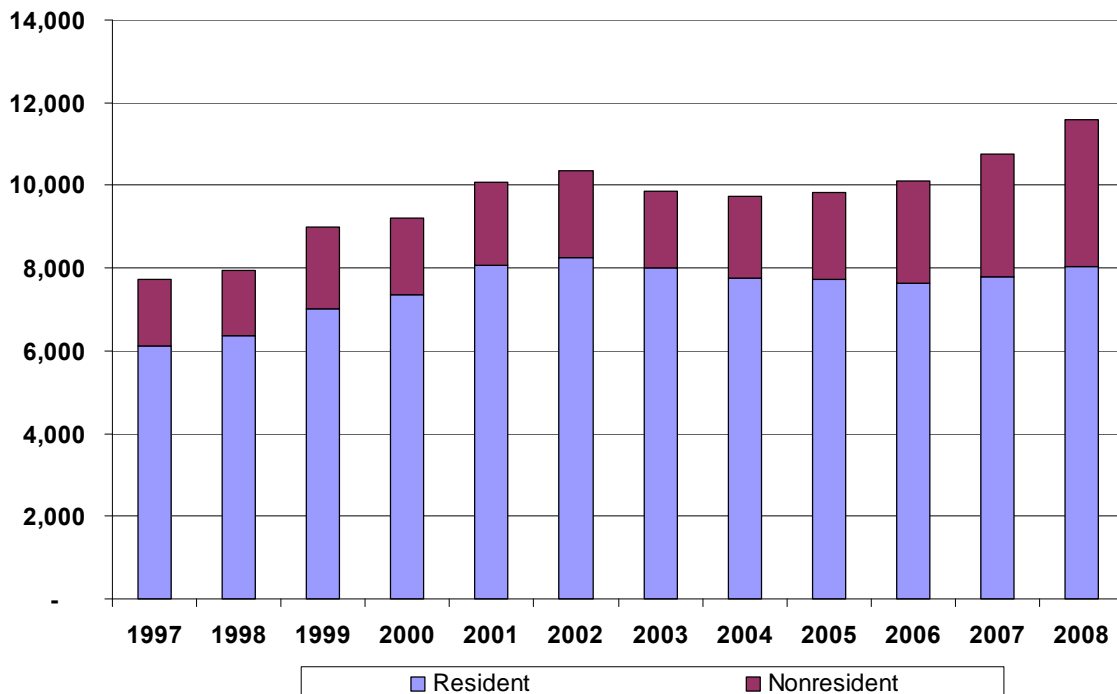
Newly Admitted Undergraduates, by Residency

	Fall 2008			Fall 2007			Change		
	Res.	Nonres.	Total	Res.	Nonres.	Total	Res.	Nonres.	Total
Eastern Oregon University	626	254	880	543	256	799	83	-2	81
Oregon Institute of Technology	607	180	787	577	178	755	30	2	32
Oregon State University - Corvallis	3,535	877	4,412	3,406	830	4,236	129	47	176
Oregon State University - Cascade	96	4	100	72	8	80	24	-4	20
Portland State University	3,486	1,188	4,674	3,182	1,020	4,202	304	168	472
Southern Oregon University	821	368	1,189	846	422	1,268	-25	-54	-79
University of Oregon	3,204	2,214	5,418	3,104	1,644	4,748	100	570	670
Western Oregon University	1,200	296	1,496	1,165	270	1,435	35	26	61
Total	13,575	5,381	18,956	12,895	4,628	17,523	680	753	1,433
NOTE: 'Residency' is determined according to the Oregon Residence Classification standards							5.3%	16.3%	8.2%
Source: OUS Institutional Research Services, First Time Freshmen Reports Table 4a, 11/03/08									

Additional Graphs



Newly Admitted Freshmen Fall Term: 1997 to 2008



Campus Briefs

Eastern Oregon University

Eastern Oregon University headcount increased 6.8% this fall to 3,666, up from 3,433 in 2007. Enrollment was fueled by growth in distance education serving the region beyond La Grande. A continued decline in international students was offset by increases in domestic transfer students, up 8.9% from 2007. The headcount represents an all-time high for Eastern, with growth in nearly every area, including graduate students.

Oregon Institute of Technology

OIT has attracted new students by expanding their offerings in Allied Health, including a joint program in Dentistry with Eastern. Strong growth in new freshman offset a slight decline in new transfer students. With programs extending into the Portland area, Seattle, the region's high schools, and distance education, OIT extends its educational reach well beyond the Klamath Falls campus.

Oregon State University – Corvallis

Oregon State topped the 20,000 mark for the first time this year with 20,320 students. While overall growth was up 2.9%, this year's recruiting resulted in a 4.6% increase in new students over fall 2007, offsetting the large graduating class of 2007-08. Resident first time freshmen maintained the steady growth of the past two years, but transfer growth reversed the one year decline, growing 8.1% in resident transfers. The resident increases were expected, but nonresident growth outpaced expectations with double digit growth in total nonresident enrollment.

Oregon State University - Cascades Campus

Cascades campus topped 500 students for the first time, growing 2.6% to 510 students. Most of the growth is in resident transfers with their Central Oregon Community College partnership filling the pipeline.

Portland State University

Portland State continues to reach all time highs in headcount for an OUS university, growing a substantial 6.4% to 26,587 students this fall, up from 24,999 in fall 2007. Growth occurred in both resident and nonresident enrollment and in undergraduate and graduate areas. Portland continues to partner with many regional education providers including Oregon Health and Sciences University, University of Oregon, Oregon State University, and a number of Oregon community colleges including Portland Community College.

Southern Oregon University

Headcount at Southern increased 5.1% to 5,082 students this fall, up from 4,836 last year. One contributor to the increase was the long awaited opening of the Medford SOU/RCC Center, a partnership with Rogue Community College. New undergraduate enrollment declined slightly, but was offset by growth in graduate programs. Growth occurred in both resident and nonresident categories, and was helped by the improved retention of earlier entering classes.

University of Oregon

University of Oregon headcount grew by 5.6% this fall over fall 2007, with significant increases in first time freshmen. A 6.3% increase in new resident freshmen, coupled with

2008 Enrollment Fact Sheet

more than five hundred additional nonresident freshmen, a 40% increase over fall 2007, illustrate that UO draws much interest from outside the state. Undergraduate enrollment continues to grow with more than 4,000 additional admitted undergraduates from ten years ago.

Western Oregon University

Headcounts at Western increased 6.2% to 5,349, up from 5,037 at this time last year. Western continues to add to its international student enrollment with 305 students, up from 243 last fall, and 59 just three years ago. Western shows strong growth in transfer students, increasing 17.9% in residents primarily from Oregon community colleges. The entering graduate class also grew, rebounding from a decline last year.

For More Information

Contact Bob Kieran, OUS Assistant Vice Chancellor of Institutional Research and Planning, at 541-346-5758 or bob_kieran@ous.edu; or Di Saunders, OUS Director of Communications, at 503-725-5714 or diane_saunders@ous.edu. Also see the **Enrollment Watch** section of the OUS website at <http://www.ous.edu/factreport/enroll/index.php>

11-13-08_bk/dls