



PAGLAN

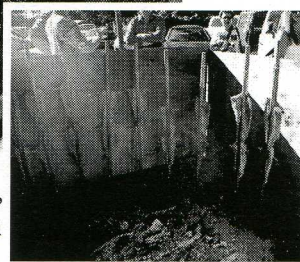
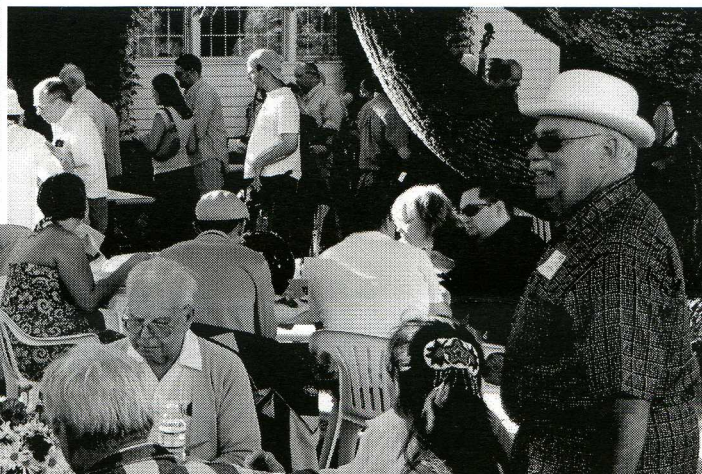
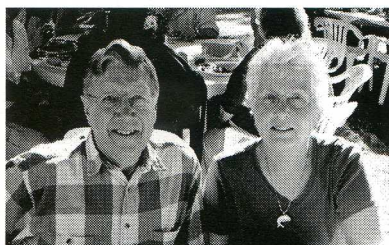
(Traditional Inuit Greeting)

A Newsletter of the Friends of the Jensen Arctic Museum

Vol. 14 No. 1

Fall 2008

23rd Annual Salmon Bake Sunday, September 14th... Get your tickets now!



For an Auction Items list, visit our our website www.wou.edu/arctic or http://www.wou.edu/president/advance-ment/jensen/salmonbake/auction_items.php

If interested in donating auction items, please call 503-838-8468.

To purchase tickets to the Salmon Bake Dinner & Auction, which are \$22.50, please contact the Jensen Arctic Museum by calling: 503-838-8468 or

via email at: arctic@wou.edu. Raffle tickets are also available now for \$2 each or 3 for \$5, and are also available the day of the event.

Please join us at this year's 23rd Annual Salmon Bake Dinner, Auction and Raffle on Sunday, Sept. 14th at 4:30 p.m. It's the Friends of the Jensen Arctic Museum's primary fundraiser. All proceeds from the evening are used to fund museum operations, special exhibits and monthly children's activities. This event is held at the historic Gentle House seated at the northern edge of Western Oregon University campus.

The event features fine food, live entertainment and a number of unique auction items, and fun raffle. Dinner includes wild Arctic salmon barbecued on poles arranged around an open fire-pit and is served with seasonal fare. The salmon

is caught by board-member, Don Oman, filleted and flown to Monmouth from Kotzebue, Alaska just for dinner! Kotzebue is a rural Inuit community located above the Arctic Circle. Dinner is served by WOU students, volunteers and board members, and this year will be catered by Frybread Man Catering.

This event started as a way to make friends for the museum and has now turned into the museums' major fundraiser. Every year over 300 of our closest friends gather for a night of terrific food & festivities. Guests come from all over Oregon, and even from Alaska to enjoy this one-of-a-kind event.

