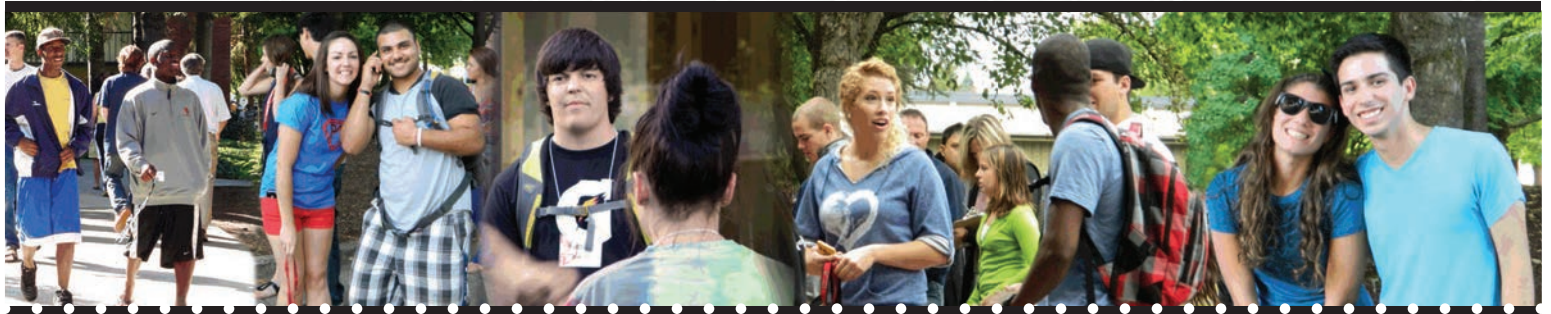


university housing



www.wou.edu/student/residences/

Housing Opportunities for TRANSFER STUDENTS

As a transfer student, you will find a full range of on-campus housing opportunities to choose from. **Located near the heart of campus, and offered at prices at or below any other university in the state, WOU housing provides transfer students with outstanding value and convenience.**

Students are strongly encouraged to take full advantage of the convenience and opportunities that WOU offers its residential students by living in one of our halls or apartments. Students should apply for housing early; priority is given to students based upon date the housing application and payment are received in the housing office.

BENEFITS OF LIVING ON-CAMPUS

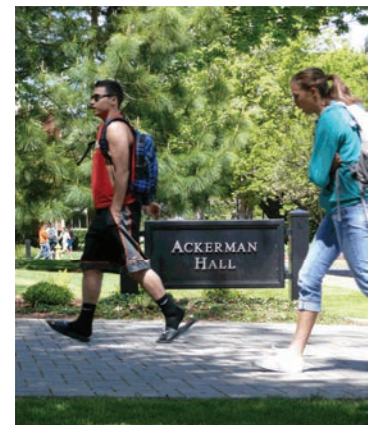
Through meeting new people, experiencing new ideas and facing new challenges, success will come academically and socially. Involvement in hall government and the Residence Hall Association offers residents the opportunity to develop leadership skills and influence on-campus living policies. Overall, statistics have shown the following to be true for residence hall students vs. their commuting counterparts:

- RESIDENCE HALL STUDENTS: CARRY & COMPLETE A HIGHER CLASS LOAD.
- ARE MORE INVOLVED IN ACTIVITIES & ORGANIZATIONS.
- SPEND LESS TIME/MONEY COMMUTING & HAVE FEWER PARKING HASSLES.
- HAVE A HIGHER RATE OF GRADUATION
- REPORT GREATER SATISFACTION WITH THEIR COLLEGE EXPERIENCE.
- ENJOY WI-FI CAMPUS-WIDE COMPUTER ACCESS

ON-CAMPUS OPTIONS

WOU offers transfer students the choice of residence hall and award winning dining services within three distinctly different types of accommodations.

- 1 TRADITIONAL:** Traditional hall with single or double accommodations available in a live-learn community.
- 2 SUITE-STYLE:** Suites that accommodate 2-3 students who share a private bathroom with separate living/sleeping areas. A limited number of these suites also offer a small kitchenette.
- 3 APARTMENT LIVING:** These apartments house 4 students within a 4-bedroom (bedrooms are all private) 2-bath (each bathroom is shared by 2 residents) apartment. The apartments feature a full kitchen and shared community living area in addition to the private bedrooms.



Questions?

Contact: the Housing and Dining office to get answers and find out more about what University Housing has to offer you.

- 503-838-8311
- 1-877-877-1593 (opt. 4)
- housing@wou.edu

ACKERMAN HALL:

Ackerman Hall – Opened in the Fall of 2010, Ackerman Hall has achieved the highest level in the Leadership in Energy and Environmental Design Green Building Rating System: LEED Platinum. Ackerman is WOU's Live-Learn residence hall and stands out as the most environmentally sustainable housing facility in its class in the nation. Ackerman proudly features a rain-water reclamation system and energy efficient lighting and heating systems. Its residents are dedicated to a "greener lifestyle" through water conservation, and a dedicated recycling program. Meal plans are required. Other amenities offered to Ackerman residents:

- Classrooms within the building to support stronger academic connection.
- Study lounges with Notebook bar
- On-site laundry facility
- Close proximity to the center of campus, Werner University Center and the Health and Wellness Center.
- Wi-Fi campus-wide computer access.

BUTLER & GENTLE HALLS:

Butler & Gentle Halls – Each of the suite-style rooms in Butler and Gentle hall are accessed from exterior entrances and feature separate living/study areas and sleeping areas. Private bathrooms are shared only by the residents of each room. Community lounges include big screen T.V. , foosball and ping pong tables. Butler Hall features a limited number of suites that offer a small efficiency kitchen within the unit. Meal plans are required.

- Close proximity to the center of campus, Werner University Center, Valsetz Dining Hall and the Health and Wellness Center.
- Wi-Fi campus-wide computer access.
- On-site laundry facility

ARBOR PARK APARTMENTS:

Arbor Park – Made up of three separate buildings (Cedar, Noble and Spruce Halls) and located at the north end of campus; yet still conveniently close to the center of campus, the Arbor Park complex houses 210 students in four-bedroom (each bedroom is private), two-bath units with full kitchens. Close proximity to the center of campus, Werner University Center, Valsetz Dining Hall and the Health and Wellness Center Arbor Park offers students all the amenities of apartment living while still benefiting from the convenience of living on campus.

Each private bedroom in Arbor Park is approximately 120 square feet and offers a private hard-wired internet connection, cable TV and climate control for the bedroom. The common living area also offers cable T.V. and internet connections.

- Close proximity to the center of campus, Werner University Center, Valsetz Dining Hall and the Health and Wellness Center.
- Wi-Fi campus-wide computer access.
- Meal Plans are optional for Arbor Park residents as the full kitchen in each unit provides the option of cooking for these residents.
- On-site laundry facility.



How do I apply?

You must apply to the University for admission to WOU before you apply for housing.

Complete a housing application and placement questionnaire and submit with the \$40 non-refundable application fee required to process your application. Enclose a check payable to Western Oregon University or call University Housing at 503-838-8311, 1-877-877-1593 toll free, to process payment via credit card. **Applications will not be processed without payment.**

Return completed application and \$40 application fee to:
University Housing
Western Oregon University,
345 Monmouth Avenue N.
Monmouth, OR 97361.

We will accept your housing application beginning October 1st for the following academic year. We encourage you to apply early. Applications received prior to October 1 will be dated October 1.

FOLLOW US:

